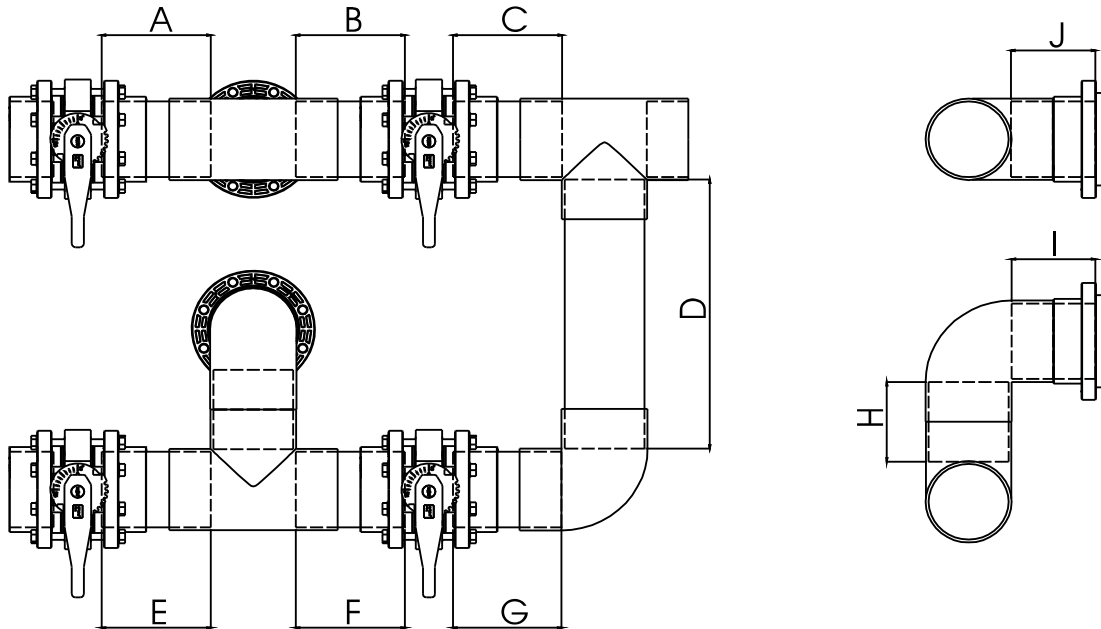


# BUTTERFLY VALVE FOR COMMERCIAL FILTERS

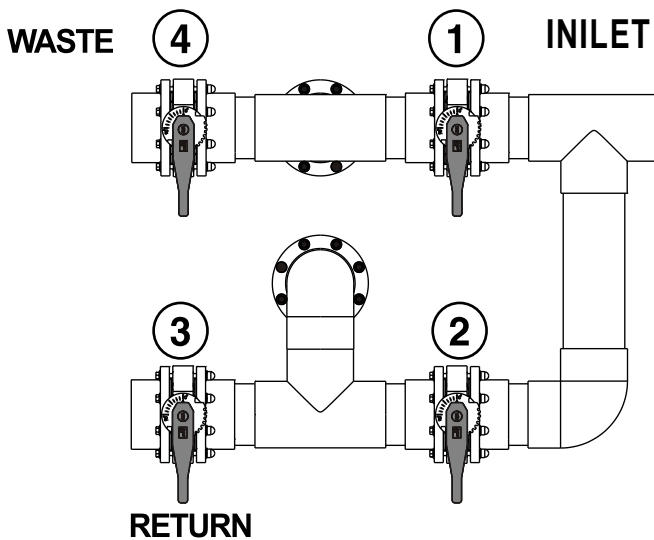
MODEL: NBV30-4 / NBV40-4 / NBV60-4 / NBV80-4



## 4 WAY BUTTERFLY VALVE

Code	Model No	A mm	B mm	C mm	D mm	E mm	F mm	G mm	H mm	I mm	J mm
88290401	NBV30-4	150	150	150	452	150	150	150	102	114	114
88290402	NBV40-4	170	170	170	484	170	170	160	130	130	130
88290403	NBV60-4	210	210	210	597	210	210	210	180	180	180
88290404	NBV80-4	300	300	300	780	300	300	300	230	230	230

## WORKING PROCESS



	①	②	③	④
<b>FILTER</b>	open	close	open	close
<b>BACKWASH</b>	close	open	close	open
<b>WASTE</b>	open	close	close	open
<b>RECIRCULATE</b>	close	open	open	close

[www.emauxgroup.com](http://www.emauxgroup.com)

EMVA15031390

# 4-WAY BUTTERFLY VALVE INSTALLATION

Tools required for installation: ① level gauge ② PVC Pipe glue ③ Two wrenches ④ Sand paper  
Installation must be completed before putting sand into the filter .

## STEP 1 – PREPARE FOR THE BUTTERFLY VALVE ASSEMBLY

1) Align the two unions, two flange panels and a butterfly valve as shown in Figure 1. Use the bolts and nuts provide to fasten these parts together (Figure 2). Ensure that each butterfly valve should be fastened by eight bolt and nuts (Figure 3).

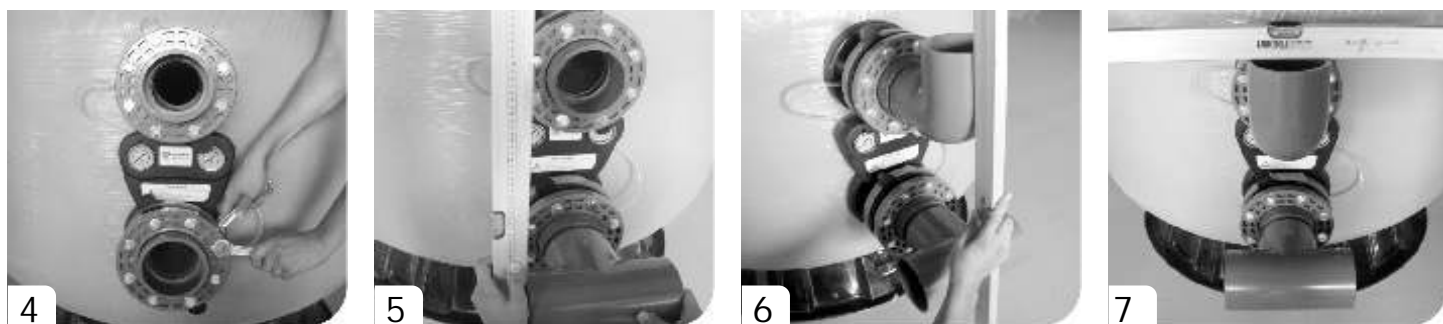


## STEP 2 - INSTALLATION

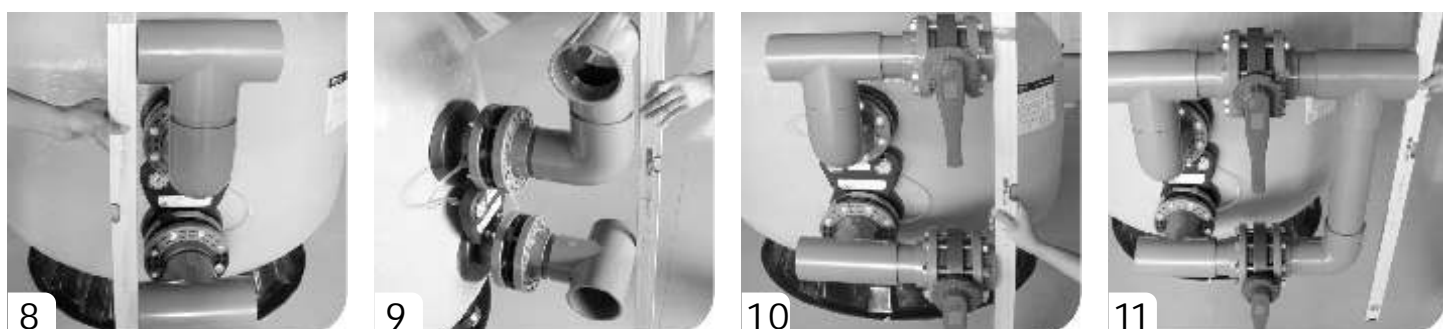
### HOW TO CONNECT THE PIPE

Use sand paper to slightly roughen the PVC pipe anywhere a connection will be made, then apply PVC glue on the contact area before connecting the pipe together.

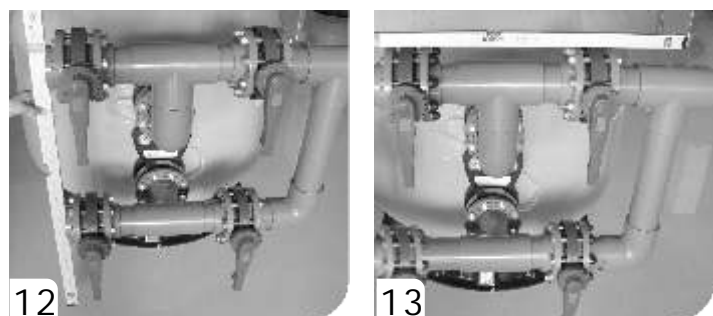
1) Install two flange panels and unions to the connector of the sand filter by using a wrench (Figure 4). Again, please ensure that each flange panel and union should be fastened by eight bolt and nuts. Use pipe glue to fix the T-joint pipe to the lower pipe connector of the sand filter, make sure the pipe opening is installed vertically (Figure 5). Use pipe glue to fix the Elbow pipe to the upper pipe connector, make sure it is installed in the same level as the T-joint and the pipe opening should be horizontal (Figure 6-7).



2) Use pipe glue to fix a T-joint pipe on the Elbow you just installed, make sure it is in the same level as the other T-joint pipe. (Figure 8-9). Then glue the butterfly valve assembly assembled in Step 1 to the pipes (Figure 10). Make sure the butterfly valves are aligned. Then connected this butterfly valve with the pipes provided (Figure 11)



3) Glue the butterfly valve assembly to the left of the pipe connectors, make sure the pipes at both side are aligned, as shown in Figure 12. Use level gauge to make sure the valve system is horizontal/vertical, (Figure 13).



Attention: Please read the installation instructions carefully and install the valve system according the steps above .