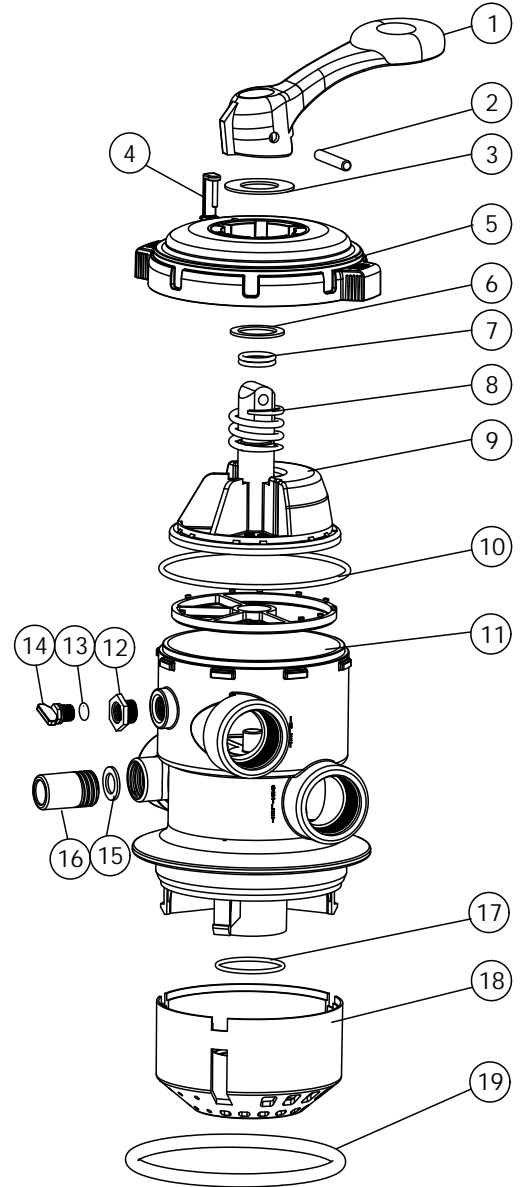


# 1.5 " Clap Type Multiport Valve for 'Filter Max "

## PARTS OF VALVE

Key No .	Part No .	Product Description	Qty
1	01013003	Handle	1
2	03018008	Pin for Handle	1
3	01181027	Washer for Handle	1
4	01181029	Defend Lock	1
5	01020003	1 5 "Lid	1
6	01181002	Washer for Handle	1
7	02011022	O -Ring for 1 5 "Valve Rotor	2
8	03014001	Spring	1
9	89280701	1 5 "Valve Rotor with Spider Gasket	1
10	02010002	O -Ring for Lid	1
11	01020004	1 5 "Body	1
12	01111048	Connector for pressure gauge stopper	1
13	02020014	O -Ring for Drain Plug	1
14	01111017	Drain Plug	1
15	02011008	O -Ring for Sight Glass	1
16	01041004	Sight Glass	1
17	02011001	O -Ring for Diffuser	1
18	01100002	1 5 "Diffuser	1
19	02010007	O -Ring	1



## WARNING



TURN PUMP OFF BEFORE CHANGING VALVE POSITION.



THIS FILTER OPERATES UNDER HIGH PRESSURE. WHEN ANY PART OF THE CIRCULATING SYSTEM (e.g., CLAMP, PUMP, FILTER, VALVES, ETC.) IS SERVICED, AIR CAN ENTER THE SYSTEM AND BECOME PRESSURIZED. PRESSURIZED AIR CAN CAUSE THE LID OR VALVE TO BE BLOWN OFF WHICH CAN RESULT IN SEVERE INJURY, DEATH, OR PROPERTY DAMAGE



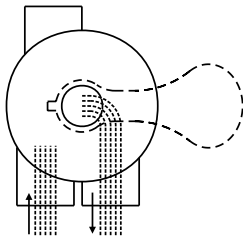
TO PREVENT DAMAGE TO THE PUMP AND FOR PROPER OPERATION OF THE SYSTEM, CLEAN PUMP STRAINER AND SKIMMER BASKETS REGULARLY.

## FUNCTIONS OF VALVE POSITIONS

Valve Position	Function
FILTER	Normal Filtration
BACKWASH	Cleaning Filter by reversing the flow
RINSE	Used after backwash to flush dirt from valve
WASTE	By-passes filter, used for vacuuming to waste or lowering water level
RECIRCULATE	By-passes filter for circulating water to pool
CLOSED	Shuts off all flow to filter or pool

### FILTER

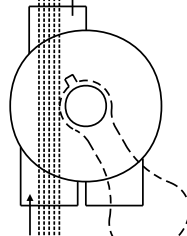
WASTE



IN FLOW OUT FLOW

### WASTE

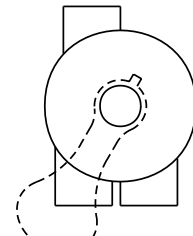
WASTE



IN FLOW OUT FLOW

### CLOSED

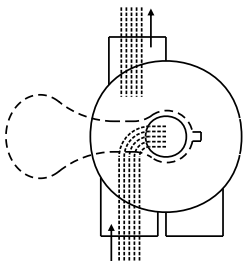
WASTE



IN FLOW OUT FLOW

### BACKWASH

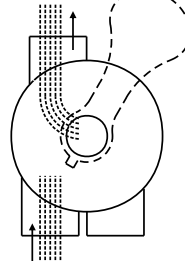
WASTE



IN FLOW OUT FLOW

### RINSE

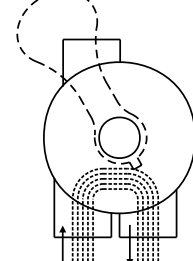
WASTE



IN FLOW OUT FLOW

### RECIRCULATE

WASTE



IN FLOW OUT FLOW

### GENERAL

- 1) Pipe tap boss provided for optional influent pressure gauge.
- 2) SERVICING VALVE( Stop pump,close gate valve in suction&discharge before proceeding):
  - a) Set handle in filter position.
  - b) Remove cover screws.
  - c) Lift cover and key assembly out.

### TO ASSEMBLE:

- d) Place valve key so that wedge opening is at TOP port (handle in Filter psn.). Flat edge of cover screw lug should align with flat edge of body screw lug.
- e) Position cover O'Ring.
- f) Secure assembly to body with cover screws. Tighten cover screws evenly and alternately. Do not over-tighten.