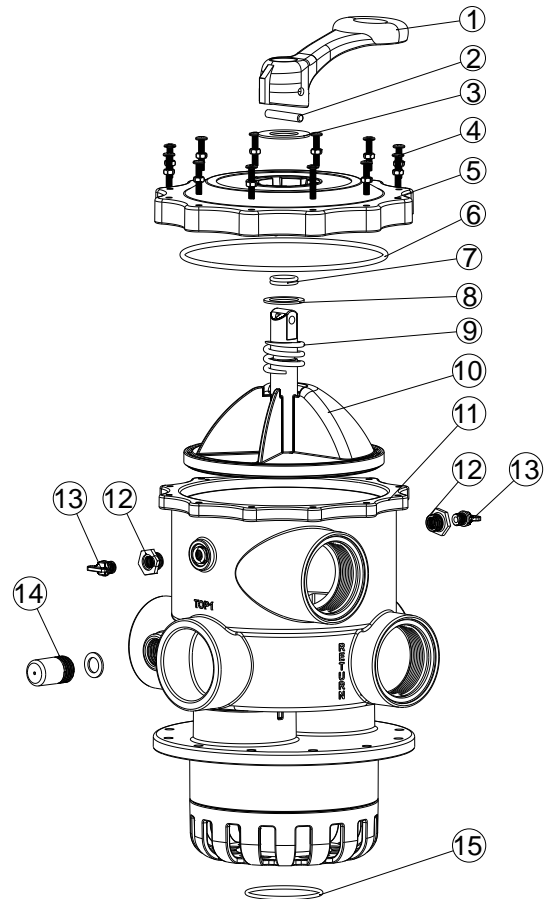





2.5" TOP MOUNT VALVE

Item No.	Part No.	Product Description	Qty
1	01013003	Handle (Fig)	1
2	03018008	Pin for Handle	1
3	01181027	Washer for Handle	1
4	89281204	M6 *33 T Screw with Nut	12
5	01021129	2.5 "Top Mount Valve Standard Lid (Black)	1
6	02010228	O -Ring for 2.5 " Valve Lid	1
7	02011022	O -Ring for 2.5 " Valve Rotor	2
8	01181002	Washer for Spring	1
9	03014025	Spring for 2.5 " Side Mount Valve	1
10	89280806	2.5 " Valve Rotor With Spider Gasket	1
11	89280115	2.5 " Side Mount Valve Bottom Body with Diffuser (Black)	1
12	01111048	Connector for Pressure Gauge /Stopper (Black)	2
	02011139	Connector with O 'Ring	2
13	89021303	Drain Plug with O 'Ring (Black)	2
14	89280104	Sight Glass With O -Ring	1
15	02010044	O -Ring for Diffuser	1



WARNING

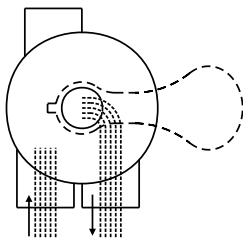
-  TURN PUMP OFF BEFORE CHANGING VALVE POSITION.
-  THIS FILTER OPERATES UNDER HIGH PRESSURE. WHEN ANY PART OF THE CIRCULATING SYSTEM (e.g., CLAMP, PUMP, FILTER, VALVES, ETC.) IS SERVICED, AIR CAN ENTER THE SYSTEM AND BECOME PRESSURIZED . PRESSURIZED AIR CAN CAUSE THE LID OR VALVE TO BE BLOWN OFF WHICH CAN RESULT IN SEVERE INJURY, DEATH, OR PROPERTY DAMAGE.
-  TO PREVENT DAMAGE TO THE PUMP AND FOR PROPER OPERATION OF THE SYSTEM, CLEAN PUMP STRAINER AND SKIMMER BASKETS REGULARLY.

FUNCTIONS OF VALVE POSITIONS

Valve Position	Function
FILTER	Normal Filtration
BACKWASH	Cleaning Filter by reversing the flow
RINSE	Used after backwash to flush dirt from valve
WASTE	By-passes filter, used for vacuuming to waste or lowering water level
RECIRCULATE	By-passes filter for circulating water to pool
CLOSED	Shuts off all flow to filter or pool

FILTER

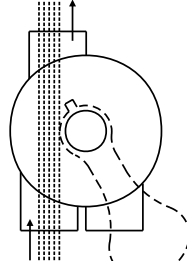
WASTE



IN FLOW OUT FLOW

WASTE

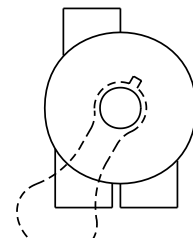
WASTE



IN FLOW OUT FLOW

CLOSED

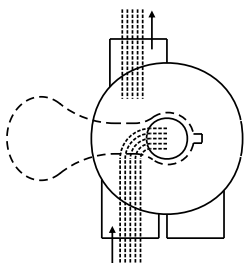
WASTE



IN FLOW OUT FLOW

BACKWASH

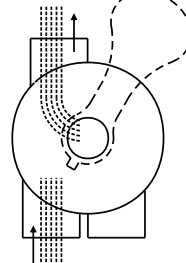
WASTE



IN FLOW OUT FLOW

RINSE

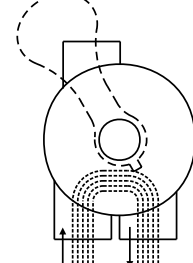
WASTE



IN FLOW OUT FLOW

RECIRCULATE

WASTE



IN FLOW OUT FLOW

GENERAL

- 1) Pipe tap boss provided for optional influent pressure gauge.
- 2) SERVICING VALVE(Stop pump,close gate valve in suction&discharge before proceeding):
 - a. Set handle in filter position.
 - b. Remove cover screws.
 - c. Lift cover and key assembly out.

TO ASSEMBLE:

- d. Place valve key so that wedge opening is at TOP port (handle in Filter psn.). Flat edge of cover screw lug should align with flat edge of body screw lug.
- e. Position cover O'Ring.
- f. Secure assembly to body with cover screws. Tighten cover screws evenly and alternately. Do not over-tighten.