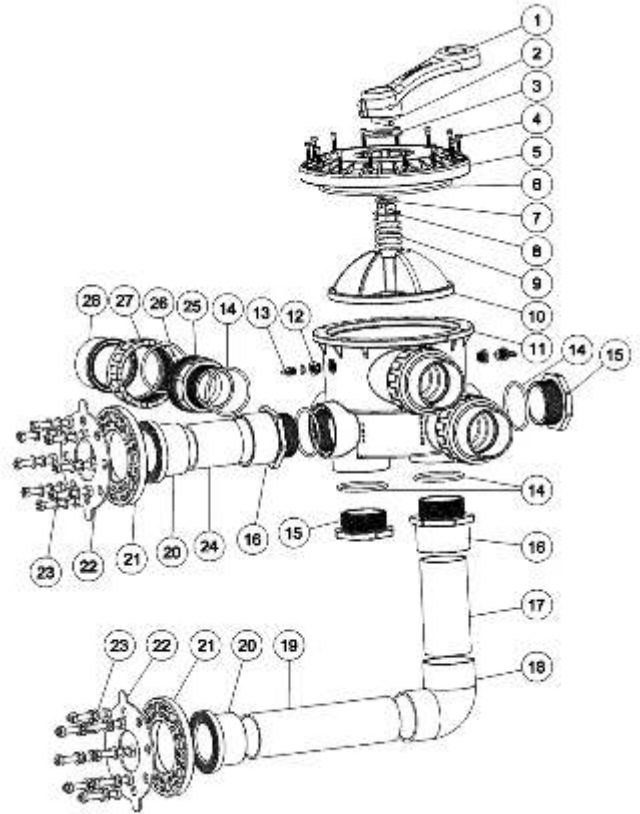


## 3.0" Side Mount Valves With Piping Kit

Key No.	Part No.	Description	Qty
1	01112062	3" Handle	1
2	03018162	Pin for Handle	1
3	01181048	Washer for Handle	1
4	89281204	M6 x 33 T Screw with Nut	14
5	01021132	Standard Lid	1
6	02010218	O-Ring for 3" Valve Lid	1
7	02010219	O-Ring for 3" Valve Rotor	2
8	01181049	Washer for Spring	1
9	03014024	Spring	1
10	89280807	3" Valve Rotor with Spider Gasket	1
11	01021131	Bottom Body	1
12	89280119	Drain Plug Fitting	2
13	89021307	Drain Plug with O-Ring	2
14	02021060	O-Ring for 3" Union	7
15	01112059	Plug	2
16	01170092	3" Union (A)	2
17	01151001	3" PVC Tube 95mm	1
18	01151031	Elbow Pipe Imperial 3"	1
19	01151001L	3" PVC Tube 310mm	1
20	01170025	3" Union (A)	2
21	01170024	3" Flange	2
22	02041005	3" Washer 196 x 84 x 4	2
23	89281206	M12 x 90 Screw with Nut	16
24	01151001E	3" PVC Tube 185mm	1
25	01112060	3" Connector	3
26	02010221	O-Ring for Union Adaptor	3
27	01112061	3" Connector Nut	3
28	01170094	3" Union Adaptor (A)	3
28	01170095	3" Union Adaptor (E)	3



### WARNING



TURN PUMP OFF BEFORE CHANGING VALVE POSITION.



THIS FILTER OPERATES UNDER HIGH PRESSURE. WHEN ANY PART OF THE CIRCULATING SYSTEM (e.g., CLAMP, PUMP, FILTER, VALVES, ETC.) IS SERVICED, AIR CAN ENTER THE SYSTEM AND BECOME PRESSURIZED. PRESSURIZED AIR CAN CAUSE THE LID OR VALVE TO BE BLOWN OFF WHICH CAN RESULT IN SEVERE INJURY, DEATH, OR PROPERTY DAMAGE.



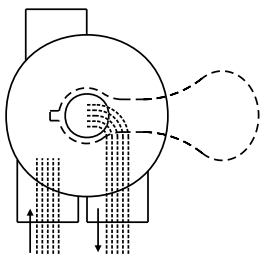
TO PREVENT DAMAGE TO THE PUMP AND FOR PROPER OPERATION OF THE SYSTEM, CLEAN PUMP STRAINER AND SKIMMER BASKETS REGULARLY.

## FUNCTIONS OF VALVE POSITIONS

Valve Position	Function
FILTER	Normal Filtration and Vacuuming
BACKWASH	Cleaning Filter by reversing the flow
RINSE	Used after backwash to flush dirt from valve
WASTE	By-passes filter, used for vacuuming to waste or lowering water level
RECIRCULATE	By-passes filter for circulating water to pool
CLOSED	Shuts off all flow to filter or pool

### FILTER

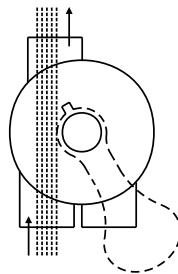
WASTE



IN FLOW OUT FLOW

### WASTE

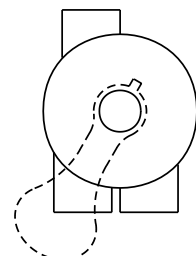
WASTE



IN FLOW OUT FLOW

### CLOSED

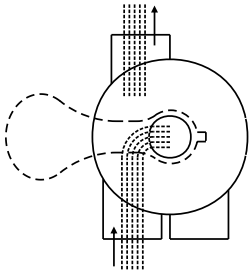
WASTE



IN FLOW OUT FLOW

### BACKWASH

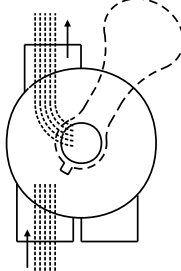
WASTE



IN FLOW OUT FLOW

### RINSE

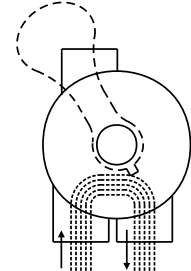
WASTE



IN FLOW OUT FLOW

### RECIRCULATE

WASTE



IN FLOW OUT FLOW

### GENERAL

- 1) Pipe tap boss provided for optional influent pressure gauge.
- 2) SERVICING VALVE( Stop pump,close gate valve in suction&discharge before proceeding):
  - a) Set handle in filter position.
  - b) Remove cover screws.
  - c) Lift cover and key assembly out.

### TO ASSEMBLE:

- 1) Place valve key so that wedge opening is at TOP port (handle in Filter psn.). Flat edge of cover screw lug should align with flat edge of body screw lug.
- 2) Position cover O'Ring.
- 3) Secure assembly to body with cover screws. Tighten cover screws evenly and alternately. Do not over-tighten.