

Sacrificial Anode Shield For Pool and Spa

Model: DF50-1(E) / DF50-1(A)

The shield is built in Zinc Sacrificial Anode that protect bather from electric shock risk especially for fiberglass pool without metal bonding; and prevent electrolytic corrosion of Pool metal part when salt water chlorinator disinfection system is applied.

Features:

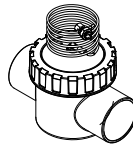
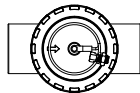
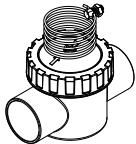
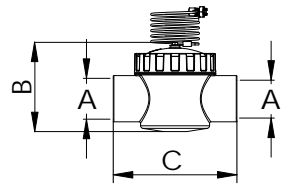
- Easy installation inline design add to existing 2" Piping System
- Prevent electrolytic corrosion of Pool metal
- Excellent prevent electric shock protection to Fiberglass Pool
- Max. 4 Bar working pressure
- Long life cycle pure zinc alloy
- 1 m 8 AWG solid copper wire and Transparent lid cover for observation



Model	Code	Color	Material	Connection
DF50-1(E)	91602701	White	ABS & PVC	63mm
DF50-1(A)	91602702	White	ABS & PVC	2" Imperial

Dimensions

Size	A	B	C
63mm	Ø63	137	190
2" Imperial	Ø60	137	190



How it works

- Sacrificial Anodes Shield are metals that are used to prevent other metals from eroding. This inline anode uses zinc anode already secured in a PVC TEE ready for installation. Once installed, the sacrificial anode will be consumed instead of the metal it is protected.
- The Sacrificial Anode Shield is tied into the pool bonding wire to protecting the entire pool
- Replace the anode after half of it has eroded, typically in about three years

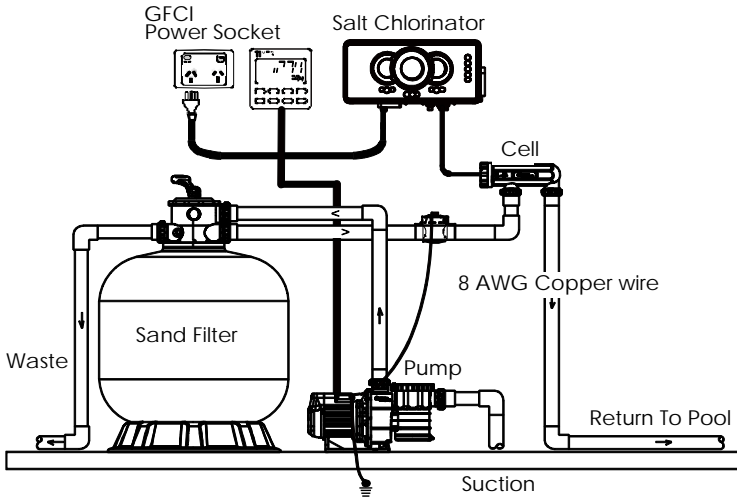
How to install

- Cut pipe to size of the "TEE" shape shield
- Glue "TEE" into pipe
- Connect Copper wire to existing pump ground using split connector



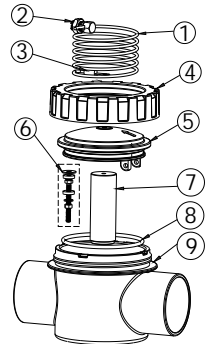
Typical installation and location

- The best place to install the shield is on the water line between the filter and before a pool heater; that would put it before the salt cell. If you do not have a heater, put the anode after the filter and before the cell.



Part List

Item	Part No.	Description	Qty
1	112030012	Copper wire	1
2	112030011	Copper wire clamp	1
3	106391490	Terminal	1
4	570523486	Nut	1
5	570306906	Cover	1
6	112000025	Screw kit	1
7	112080001	Zinc alloy rod	1
8	111002375	O-ring	1
9	570383479	2" port valve housing (Metric)	1
	570384040	2" port valve housing (Imperial)	



Zinc Alloy Replacement

- Open the transparent cover and release the zinc alloy by clockwise rotation to take off it.
- Replace a new zinc alloy and tighten it by anti clockwise rotation.
- Make sure to secure and tighten the hex nut with transparent cover.
- Put it back to the body, lock inside the bottom holder and tighten the cover again.

