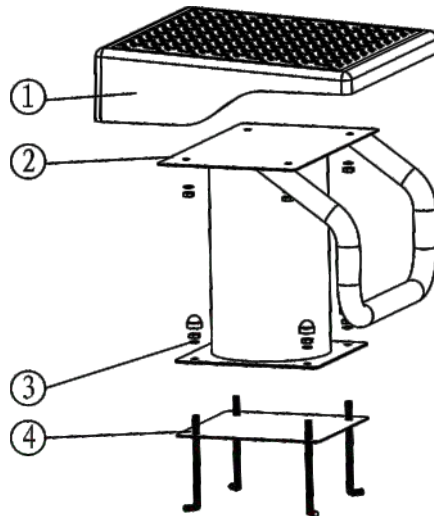


Spare Part List

| Item | Part No. | Description                    | Qty | Unit |
|------|----------|--------------------------------|-----|------|
| 1    | 01169907 | Set noodles(gradient 3 degree) | 1   | Pc   |
|      | 01169908 | Set noodles(gradient 6 degree) | 1   | Pc   |
| 2    | 89520101 | Prop up a piece                | 1   | Set  |
| 3    | 89520201 | Fixed piece                    | 4   | Set  |
| 4    | 89520301 | Prepare to cover up a piece    | 1   | Set  |



# Starting Platform User Manual

Models: STP30R / STP60R



## Installation

Install the Starting Platform on either side of the swimming pool , 0.6m from the edge of the swimming pool . Also , the water level should be at least 1.3m depth . The Starting Platform should be installed in the middle of every swim lane , and parallel to the edge of the swimming pool .

Please refer below the procedure and diagram for the installation :

- 1 . Put a sign in the middle of every swim lane to confirm the position for the Starting Platform (250mm from the edge of the swimming pool ) .
- 2 . Install the embedded parts on the sign; make sure the embedded parts is parallel to the edge of the swimming pool .

3. Use the front edge of the embedded parts as one side , draw a 480mm x 480mm square , and dig a 300mm depth trough.
4. Put 4 steel bars into the trough , weld the 4 steel bars with the embedded parts (the embedded parts should be 15mm above the swimming pool .)
5. Fill the empty space of the trough with C30 grade concrete (add waterproofing agent ) , do other necessary waterproof coating on the concrete .
6. Stick the swim lane number onto the supporttube , the sticker should be 90mm from the bottom of the support plate see Figure 1 .
7. After the concrete dry up , fix the Starting Platform onto the embedded parts . Make sure the Starting Platform is parallel to the embedded parts .
8. Firmly fix the Starting Platform onto the embedded parts with screw (with flat pad ,washer and screw nut )

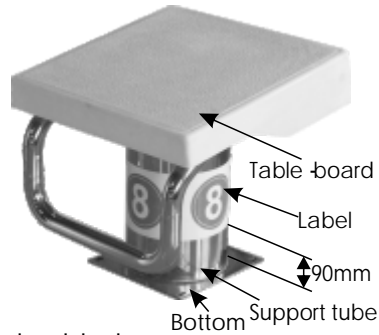
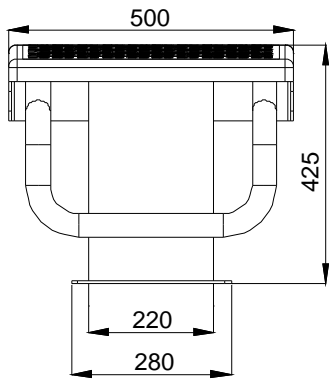
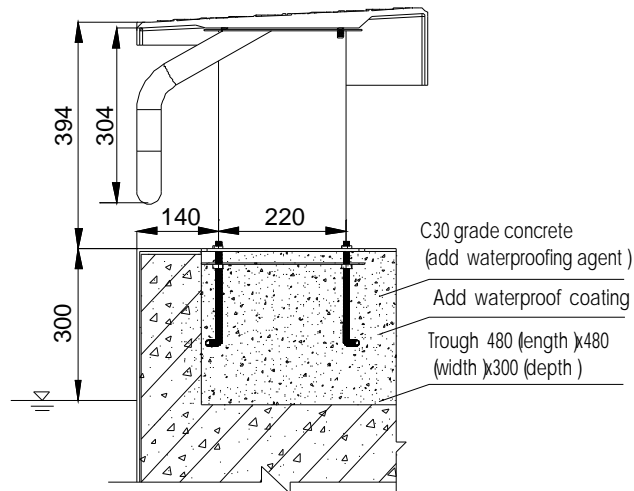


Figure 1.



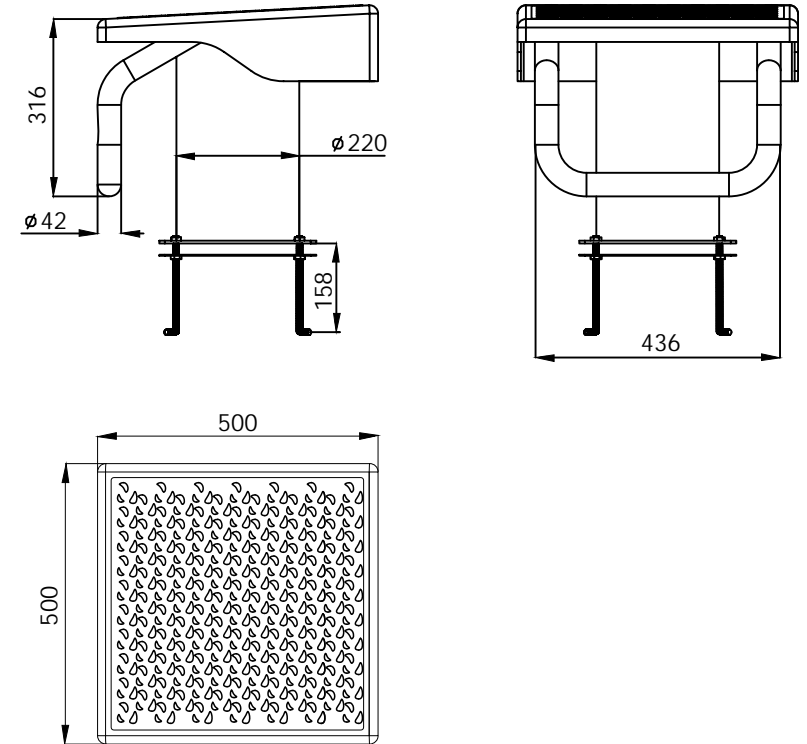
Starting Platform 3D Drawing  
(Uint: mm)



Installation Diagram (Uint: mm)

Product Dimension

(Uint: mm)



Maintenance

- 1 . Check the Starting Platform occasionally , loosen the screw nut to check if the screw is firmly fixed or not .
- 2 . Avoid stepping on the platform when wearing shoes .
- 3 . Use the backstroke handles in appropriate way .
- 4 . Scrub away the dirt on the platform with cotton . Avoid using coarse materials for scrubbing.