



# **SUPERIOR ENERGY EFFICIENCY**

FOR RESIDENTIAL POOL AND  
WATER FEATURES



**Variable Speed Pump**

# INNOVATIVE AND HIGH PERFORMANCE

The Emaux E-Turbo variable speed pump is a cutting-edge product that combines efficiency and reliability. It features a unique back cover design that reduces noise, increases durability and prevents electric shocks. It also has a superior cooling system that extends the life of the pump and ensures optimal performance in challenging conditions. The removable panel offers easy installation and access to controls, making maintenance and adjustments simple and convenient. The membrane keypad has large keys that are easy to find and press accurately.



## Special Design for Strainer Basket

### Robust Structure Design:

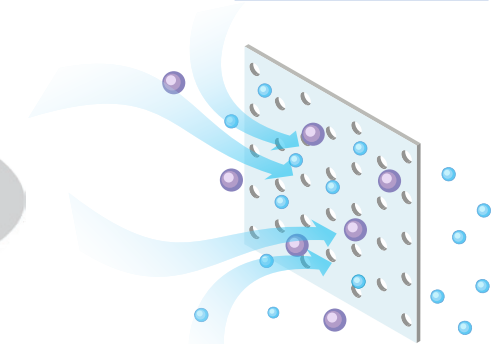
Resistant to suction pressure and damage. It is made of durable materials that can handle the tough chemicals and water conditions that are common in pool systems, delivering consistent and reliable performance for a long time.

### Basket:

Enlarged 3-Litre Straine

### Close Bottom Basket:

The enclosed bottom basket allows to capture of small heavy waste which condenses at the bottom.



### Special Hole Design:

Ensures optimal water flow and debris filtration. The holes are uniformly sized at 3mm, which allows water to pass through smoothly while trapping larger debris.

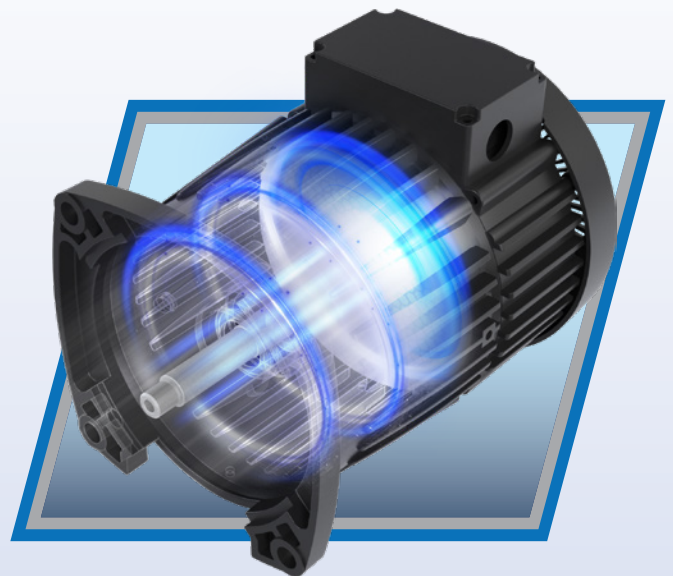
### Bonus filter bag:

Protect the pump with a bonus nylon filter bag. This accessory can catch hair, fine leaves and other small debris that could damage the impellor. By using the filter bag, you can extend the lifespan of your pump and keep it running smoothly.

## Special Design for PMM Motor

### Motor Advantages

The PMSM motor has an integrated PCB design, reducing the motor size by 20%. This allows the pump to achieve a streamlined and concise design. The motor has a high efficiency of up to 86%, surpassing industry standards. The rotor is specially designed (Patent) and processed to not only improve the reliability, but also enhance its stability, ensuring quiet and smooth operation.



# PHYSICAL STRUCTRE

## Transparent Lid

Allows quick inspection, saving time and effort.

## Ring Lock

Design for easy Maintenance.

## Union Connections

1.5" ID / 50mm ID,  
2.0" OD / 63mm OD

## Basket

Enlarged 3-Litre Strainer

## Pump Body

Glass Filled Acrylonitrile  
Butadiene Styrene

## Diffuser

Made of glass filled polycarbonate



## Retro-Fit Replacement

Precise alignment with plumbing position, making it easy to replace **Astralpool SENA**.

With Adjustable base: **ESPA Silen & Astralpool Victoria Plus**.



### **Air Ventilation**

The motor has fins extending out from the engine to pull heat away. Cool air is then forced over the fins. The back cover formed a ventilation path around the motor to keep air flowing to the hottest areas. Improve Cooling efficiency.

### **Innovative Addition Back Cover**

- Noise reduction: help dampen the noise generated by motor.
- Corrosion Protection: resistance to corrosion compared to metal casing.
- Electric leakage prevention: provide an additional layer of isolation, reducing the chances of electric leakage from the motor.

### **Detachable Smart Control Panel**

Operate by Variable Speed Driver easy removal and reattachment, providing flexibility and portability.

### **Motor**

- Permanent Magnet Motor (PPM)
- Totally Enclosed Fan Cooled (TEFC)
- Aluminium Motor Casting
- 800 RPM - 3400 RPM
- Voltage: 115V / 230V

### **Shaft Seal**

- Carbon rotating face
- SiC Stationary face
- Stainless Steel 316 spring
- EPDM Bellows

### **Impeller**

Made of glass filled polycarbonate

# New Connectivity and External Smart Control

## DOWNLOAD THE APP EMAUX PUMP

NEW



1. Wi-Fi AP mode or Home Network STA Mode
2. RS485 communication port



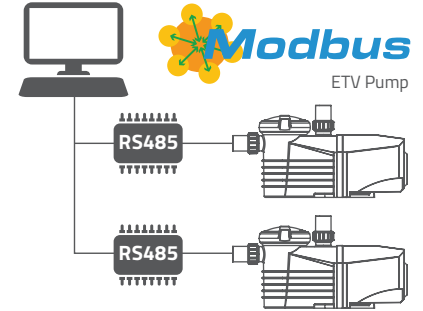
Wi-Fi connectivity:

1. IEEE802.11, 2.4GHz, b/g/n
2. Internal antenna, open area 25m
3. Data throughput 300Mbps



Modbus:

1. Enables connecting a master (PC) and several slaves (ETV Pumps).
2. RTU over RS485 communication port
3. Support all standard Modbus protocol equipment
4. Isolated AB data bus
5. Max Baud Rate 9600bps



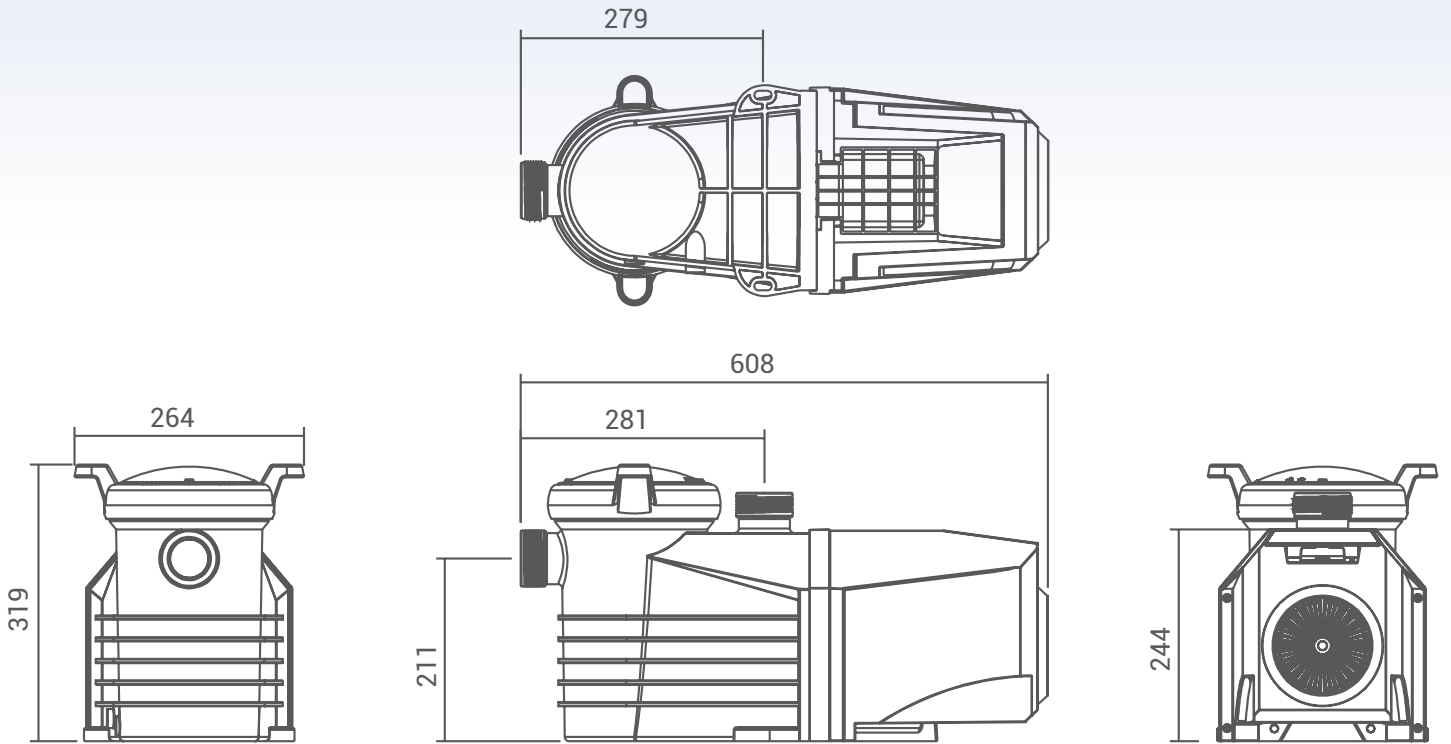
## DETACHABLE PANEL ALLOW WALL MOUNTING



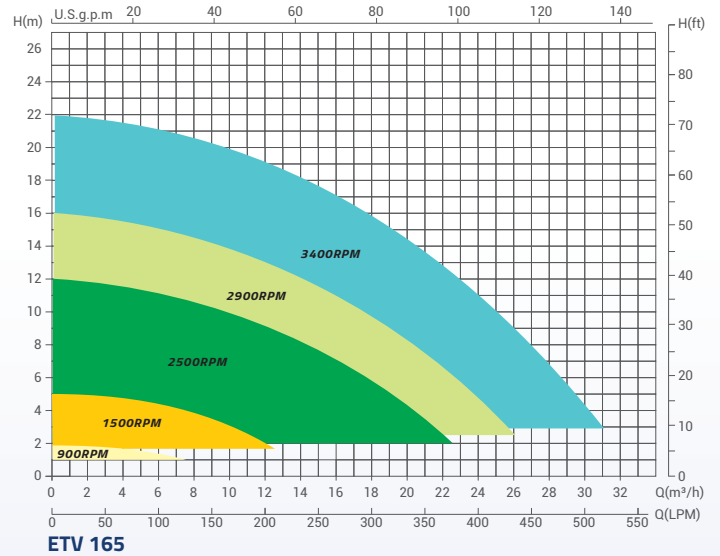
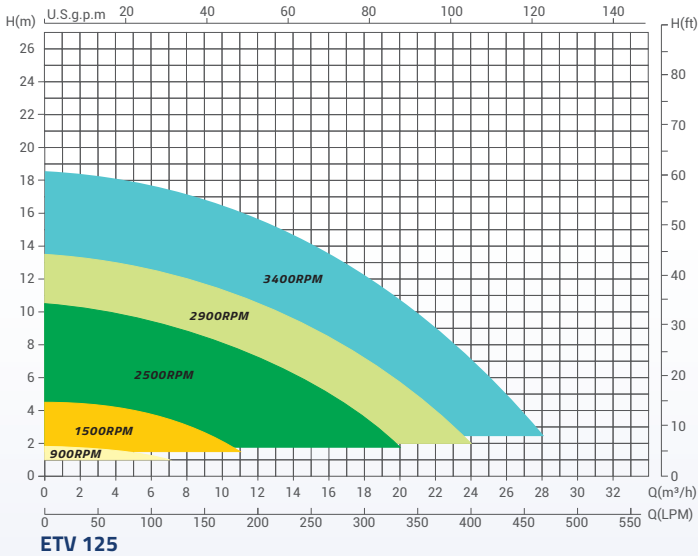
## DETACHABLE SMART CONTROL PANEL

- LCD with backlight offers good visibility even in low-light conditions.
- Simple and clear indication on the screen.
- User- friendly interface.
- Large key membrane provides good tic tac feeling, easy to press.

# Product Dimensions



# Technical Information



## Model: ETV 125

| RPM                          | 900 RPM | 1500 RPM | 2500 RPM | 2900 RPM |
|------------------------------|---------|----------|----------|----------|
| Power Input (w)              | 40      | 110      | 410      | 610      |
| Current (amp)                | 0.3     | 0.5      | 0.8      | 2.6      |
| Flow Rate (m³ / h)           | 7.9     | 11.2     | 19.8     | 23.1     |
| Flow Rate (l / m)            | 131.6   | 186.6    | 330.5    | 385.8    |
| Efficiency (Liters per watt) | 197.5   | 101.8    | 48.3     | 37.9     |

## Model: ETV 165

| RPM                          | 900 RPM | 1500 RPM | 2500 RPM | 2900 RPM |
|------------------------------|---------|----------|----------|----------|
| Power Input (w)              | 50      | 130      | 505      | 850      |
| Current (amp)                | 0.3     | 0.6      | 2.2      | 3.8      |
| Flow Rate (m³ / h)           | 6       | 12.4     | 22       | 25       |
| Flow Rate (l / m)            | 101.1   | 206.6    | 367.5    | 416.6    |
| Efficiency (Liters per watt) | 121.4   | 95.3     | 43.6     | 29.4     |

| Code    | Model   | Power                  | Connection size                     | Weight | Input Power | Housepower | RPM      |
|---------|---------|------------------------|-------------------------------------|--------|-------------|------------|----------|
| 9020401 | ETV 125 | 115 / 230V, 50 / 60 Hz | 1.5"ID / 50mm ID, 2.0" OD / 63mm OD | 20 Kg  | 1.1 kW      | 1.25 hp    | 800-3400 |
| 9020402 | ETV 165 | 115 / 230V, 50 / 60 Hz | 1.5"ID / 50mm ID, 2.0" OD / 63mm OD | 20 Kg  | 1.5 kW      | 1.65 hp    | 800-3400 |



**EMAUX WATER TECHNOLOGY CO., LTD**

**ADDRESS: Flat A-D, 20/F., Kai Bo 22, 22 Wing Kin Road,  
Kwai Chung, HK**

**PHONE +852 2832 9880**

**[www.emauxgroup.com](http://www.emauxgroup.com)**

**💧 YOUR PREMIER SUPPLIER**