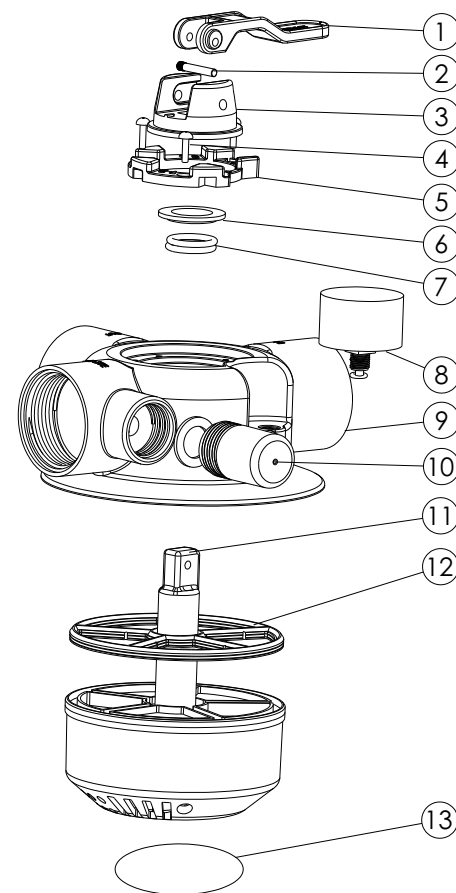


VALVE FOR "ULTRA" REPLACEMENT PARTS

| Key No. | Part No. | Description | QTY |
|---------|-----------|--|-----|
| 1 | 01013130 | Handle | 1 |
| 2 | 03018160 | Pin for Handle | 1 |
| 3 | 01013131 | Fixation for 1.5" 4-Way Valve Handle | 1 |
| 4 | 03011003 | Ø 4 x 12 Self-Drilling Screw | 3 |
| 5 | 01013132 | Pressing Ring | 1 |
| 6 | 01181060 | Washer for 1.5" 4-Way Valve Handle | 1 |
| 7 | 02011095 | O-Ring for Rotor | 2 |
| 8 | 06021014 | Plastic Pressure Gauge with O-Ring (40Psi) | 1 |
| 9 | 01013134 | Body | 1 |
| 10 | 89280104 | Sight Glass with O-Ring | 1 |
| 11 | 89281601 | 1.5" 4-way Valve Rotor Assembly | 1 |
| 12 | 02311010 | Spider Gasket | 1 |
| 13 | 430395045 | O-Ring for Diffuser | 1 |

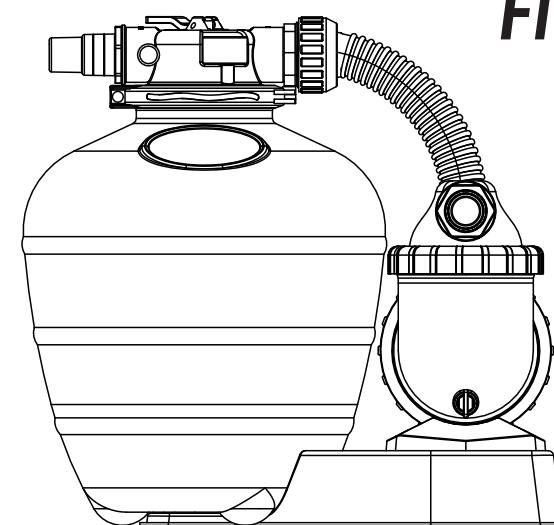


| Valve Position | Function |
|--------------------|---|
| FILTER | Normal Filtration and Vacuuming |
| BACKWASH | Cleaning Filter by reversing the flow |
| RINSE | Used after backwash to flush dirt from valve |
| WASTE | By-passes filter, used for vacuuming to waste or lowering water level |
| RECIRCULATE | By-passes filter for circulating water to pool |
| CLOSED | Shuts off all flow to filter or pool |

WARNING

- ⚠ THIS FILTER OPERATES UNDER HIGH PRESSURE. WHEN ANY PART OF THE CIRCULATING SYSTEM (e.g., CLAMP, PUMP, FILTER, VALVES, ETC.) IS SERVICED, AIR CAN ENTER THE SYSTEM AND BECOME PRESSURIZED. PRESSURIZED AIR CAN CAUSE THE LID OR VALVE TO BE BLOWN OFF WHICH CAN RESULT IN SEVERE INJURY, DEATH, OR PROPERTY DAMAGE
- ⚠ TURN PUMP OFF BEFORE CHANGING VALVE POSITION.
- ⚠ TO PREVENT DAMAGE TO THE PUMP AND FOR PROPER OPERATION OF THE SYSTEM, CLEAN PUMP STRAINER AND SKIMMER BASKETS REGULARLY.
- ⚠ DO NOT UNSCREW SCREWS OF FLANGE CLAMP WHILE PUMP IS RUNNING.

FSU-8TP FSU-8P



FILTER & PUMP COMBO

Installation & Operating Instruction



INSTALLATION

- * Install filtration system including pump, filter tank and multiport valve.
- * The filter system should be installed as close as possible to the swimming pool and preferably at a level of 0.50 metres below the surface of the water in the swimming pool. Make sure there is drainage available at the place where the filter is to be installed.
- * PUMP**
 1. Only qualified, licensed personnel should install pump and wiring.
 2. Electrical Contractors Please Note: All 220 volt 50Hz pump must be wired to the main power supply through an approved and correctly rated contractor.
 3. Allow for gate valve in suction piping.
 4. Pump suction and discharge connections have moulded in thread stops, do not try to screw pipe in beyond these stops.
- * FILTER TANK and MULTIPORT VALVE**
 1. Loading the sand media. Filter sand media is loaded through the top opening of the filter.
 - a. Loosen the plastic clamps from tank neck.
 - b. Cap internal pipe with plastic cap to prevent sand from entering it.
 - c. We recommend filling tank approximately 1/2 way with water to provide a cushion effect when the filter sand is poured in. This helps protect the under-drain laterals from excessive shock.
 - d. Carefully pour in correct amount and grade of filter sand. Be sure center pipe remains centered in opening. Sand surface should be leveled and should come to about the middle of the filter tank. Remove plastic cap from internal pipe.
 2. Assemble filter control valve to filter tank.
 - a. Insert filter control valve (with O-ring in place) into the tank neck, taking care that the center pipe slips into the hole in the bottom of the valve.
 - b. Place two plastic clamps around valve flange and tank neck and tighten just enough so that the valve may be rotated on tank for final positioning.
 - c. Carefully screw pressure gauge (with O-ring in place) into tapped hole in valve body. Do not over-tighten.
 - d. Connect pump to control valve opening marked PUMP with hose. After connections are made, tighten clamps with screwdriver, tapping around clamp with screwdriver handle to help seat valve flange clamp.
 3. Make return to pool pipe connection to control valve opening marked RETURN and complete other necessary plumbing connections, suction lines to pump, waste, etc.
 4. To prevent water leakage, be sure all pipe connections are tight.

- ❖ Release all air from filter and piping system.
- ❖ In a flooded suction system (water source higher than pump), pump will prime itself when suction and discharge valves are opened.
- ❖ If pump is not in a flooded suction system, unscrew and remove trap cover; fill trap and pump with water.
- ❖ Clean and inspect Ring; re-install on trap cover.
- ❖ Replace trap cover on trap; turn clockwise to tighten cover.

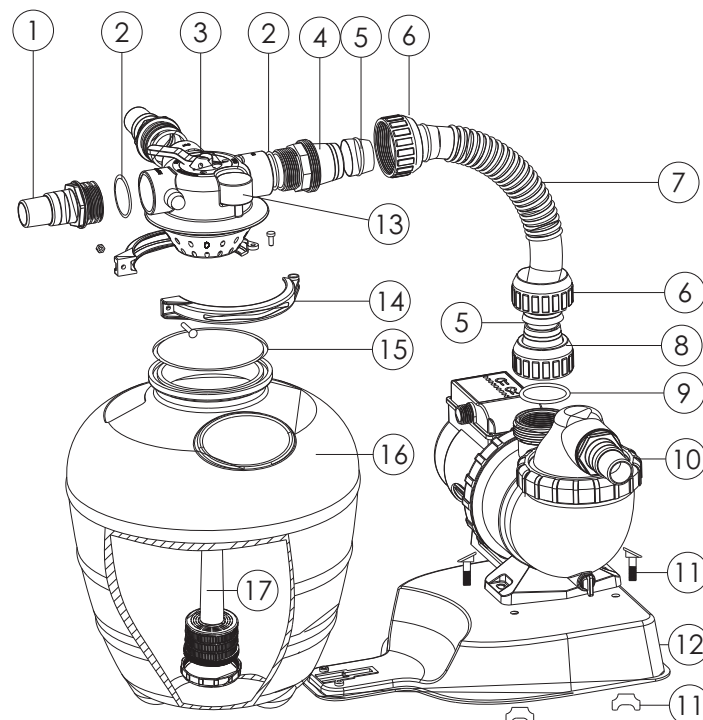
NOTICE: Tighten trap cover by hand only .Pump should prime now. Priming time will depend on vertical length of suction lift and horizontal length of suction piping.

INSTALL/START-UP OF FILTRATION

1. Be sure correct amount of filter media sand is in tank and that all connections have been made and are secure.
2. Depress control valve handle and rotate to BACKWASH position. (To prevent damage to control valve seal, always depress handle before turning.)
3. Prime and start pump. Never tun pump dry! Running pump dry may damage seals,causing leakage and flooding! Fill pump with water before starting motor. (be sure all suction and return lines are open), allowing the filter tank to fill with water. Once water is flowing out of the waste line, run the pump for at least 1 minute. The initial back-washing of the filter is recommended to remove any impurities or fine sand particles in the sand media.
4. Turn pump off and set valve to RINSE position. Start pump and operate until water in sight glass is clear, about 1/2 to 1 minute. Turn pump off and set valve to FILTER position and restart pump.The filter is now operating in the normal filter mode, filtering dirt particles from the pool water.
5. Adjust pool suction and return valves to achieve desired flow. Check system and filter for water leaks and tighten connections, bolts, nuts, as required.
6. Note the initial pressure gauge reading when the filter is clean. (It will vary from pool to pool depending upon the pump and general piping system.) As the filter removes dirt and impurities from the pool water, the accumulation in the filter will cause the pressure to rise and flow to diminish. When the pressure gauge reading is 1.5 bar, higher than the initial "clean" pressure you noted, it is time to backwash the filter (see BACKWASH under filter and control valve functions).

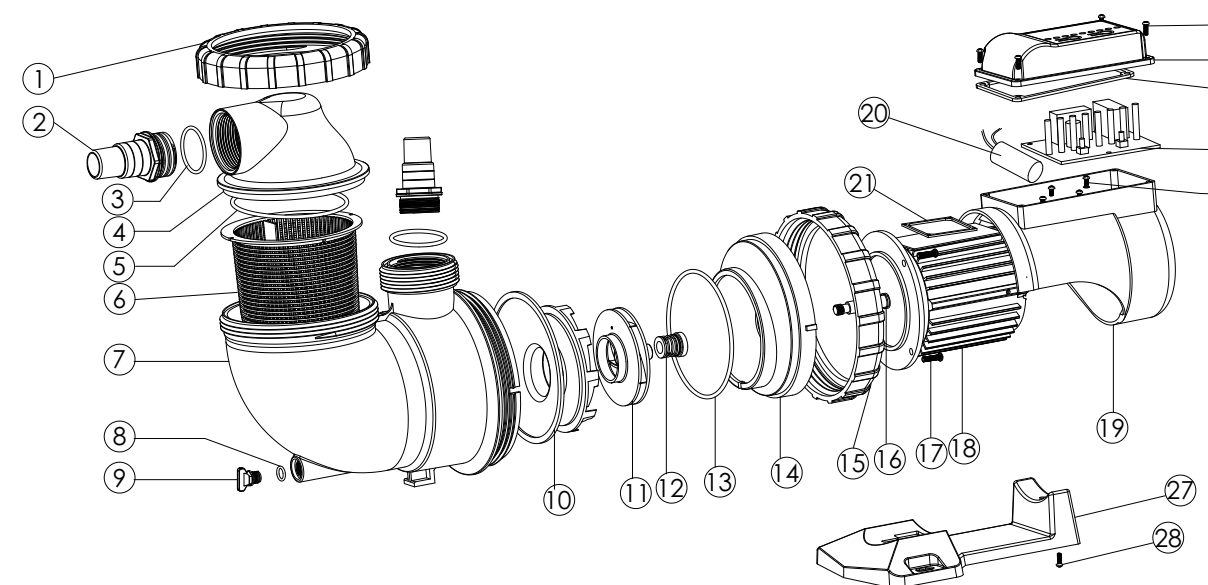
NOTE: During initial clean-up of the pool water it may be necessary to backwash frequently due to the unusually heavy initial dirt load in the water.

REPLACEMENT PARTS OF FILTER



| Key No | Part No. | Description | QTY |
|--------|----------|---|-----|
| 1 | 01013051 | 32mm and 38mm Adaptor | 3 |
| 2 | 02020013 | O-Ring | 4 |
| 3 | 88281105 | 4 Way Valve | 1 |
| 4 | 01013047 | Hose Adaptor | 1 |
| 5 | 02011026 | Sleeve for Hose | 2 |
| 6 | 01013046 | Nut for Hose | 2 |
| 7 | 01370011 | Hose | 1 |
| 8 | 01013049 | Hose Adaptor with Nut | 1 |
| 9 | 02011104 | O-Ring for 1.5" Union | 1 |
| 10 | 88028401 | AMU020TP AQUA-MINI Pump (with Timer & Pre-Filter) | 1 |
| 10 | 88027801 | AMU020P AQUA-MINI Pump (with Pre-Filter) | 1 |
| 11 | 89033601 | Pump Assembly Screw | 1 |
| 12 | 01111105 | Combo Base | 1 |
| 13 | 06021014 | Plastic Pressure Gauge with O-Ring (28psi) | 1 |
| 14 | 89033602 | Clamp Lock with Screws & Nut | 1 |
| 15 | 02010045 | O-Ring | 1 |
| 16 | 01331061 | 13" Filter Tank | 1 |
| 17 | 89033603 | Lateral Assembly with Center Pipe | 1 |

AMU PUMP REPLACEMENT PARTS



| Key No | Part No. | Description | QTY | Key No. | Part No. | Description | QTY |
|--------|----------|--|-----|---------|----------|---|-----|
| 1 | 01021067 | Nut for Lid | 1 | 14 | 01021069 | Flange | 1 |
| 2 | 89280105 | 1.5" Union (Optional) | 2 | 15 | 01021068 | Nut for Body | 1 |
| 2 | 01013015 | 1.5" Connector | 1 | 16 | 02011156 | Motor Slinger | 1 |
| 2 | 01013051 | 32mm-38mm Union (Optional) | 2 | 17 | 03011067 | Screw for Flange | 4 |
| 3 | 02011104 | O-Ring for 1.5" Union | 2 | 18 | 04021203 | Motor (AMU020TP/AMU020P) (220V/50Hz)(220V/60Hz) | 1 |
| 3 | 02020013 | O-Ring | 2 | 19 | 01321019 | Fan Cover | 1 |
| 4 | 01041045 | Transparent Lid | 1 | 20 | 04016036 | Capacitor for AMU012TP/AMU012P&AMU016TP/AMU016P (220V/50Hz,220V/60Hz) | 1 |
| 5 | 02020049 | O-Ring for Lid | 1 | 20 | 04016030 | Capacitor for AMU020TP/AMU020P(220V/50Hz,220V/60Hz) | 1 |
| 6 | 01111104 | Basket | 1 | 21 | 02020048 | Cover Slinger | 1 |
| 7 | 01021070 | AMU Pump Body | 1 | 22 | 03011007 | M4 x 12 Screw | 4 |
| 8 | 02020014 | O-Ring for Drain Plug | 1 | 23 | 01321018 | Cable Box | 1 |
| 9 | 01111017 | Drain Plug | 1 | 24 | 02020012 | Slinger for Cable Box | 1 |
| 10 | 01111103 | Diffuser | 1 | 25 | 04015041 | PCB (for AMU020TP) | 1 |
| 11 | 01311044 | Impeller AMU020TP/AMU020P) (220V/50Hz) | 1 | 26 | 03011100 | Screw | 4 |
| 11 | 01311046 | Impeller AMU020P&TP(220V/60Hz) | 1 | 27 | 01111102 | Base | 1 |
| 12 | E022601 | 1/2" Mechanical Seal | 1 | 28 | 03011006 | Screw for Base | 1 |
| 13 | 02020011 | O-Ring for Flange | 1 | | | | |

PRIMING PUMP

⚠ WARNINGS:

- *The Emaux pump must be connected to the main power supply by an approved and licensed electrician.
- *If the supply cord is damaged, it must be replaced by the manufacturer, service agent, or similarly qualified individuals to avoid hazards.
- *This appliance is not suitable for individuals (including children) with reduced physical, sensory, or mental capabilities or those lacking experience and knowledge unless supervised or instructed by a person responsible for their safety.
- *Children should be supervised to stay away from the circulation system equipment and prevent them from playing with it
- *The maximum total head is 1 meter.
- *Contamination of the liquid may occur due to lubricant leakage.
- ***The pool pump system must not be used unless a properly functioning safety suction and/or skimmer box specifically designed for the swimming pool has been installed.**
- *During pump startup, please stay away from the circulation system equipment. Before servicing the pool and spa water circulation system, ensure that all system and pump controls are in the off position. Before starting the system pump, all system valves must be set to allow the system water to return to the pool. Do not change the position of the filter control valve while the system pump is running.
- *The pump must be supplied with a residual current device (RCD) with a rated residual operating current not exceeding 30 mA.