



# SMART AI-DRIVEN POOL MANAGEMENT

powered by



For modern residential pools

## CyberSync

Pool Station



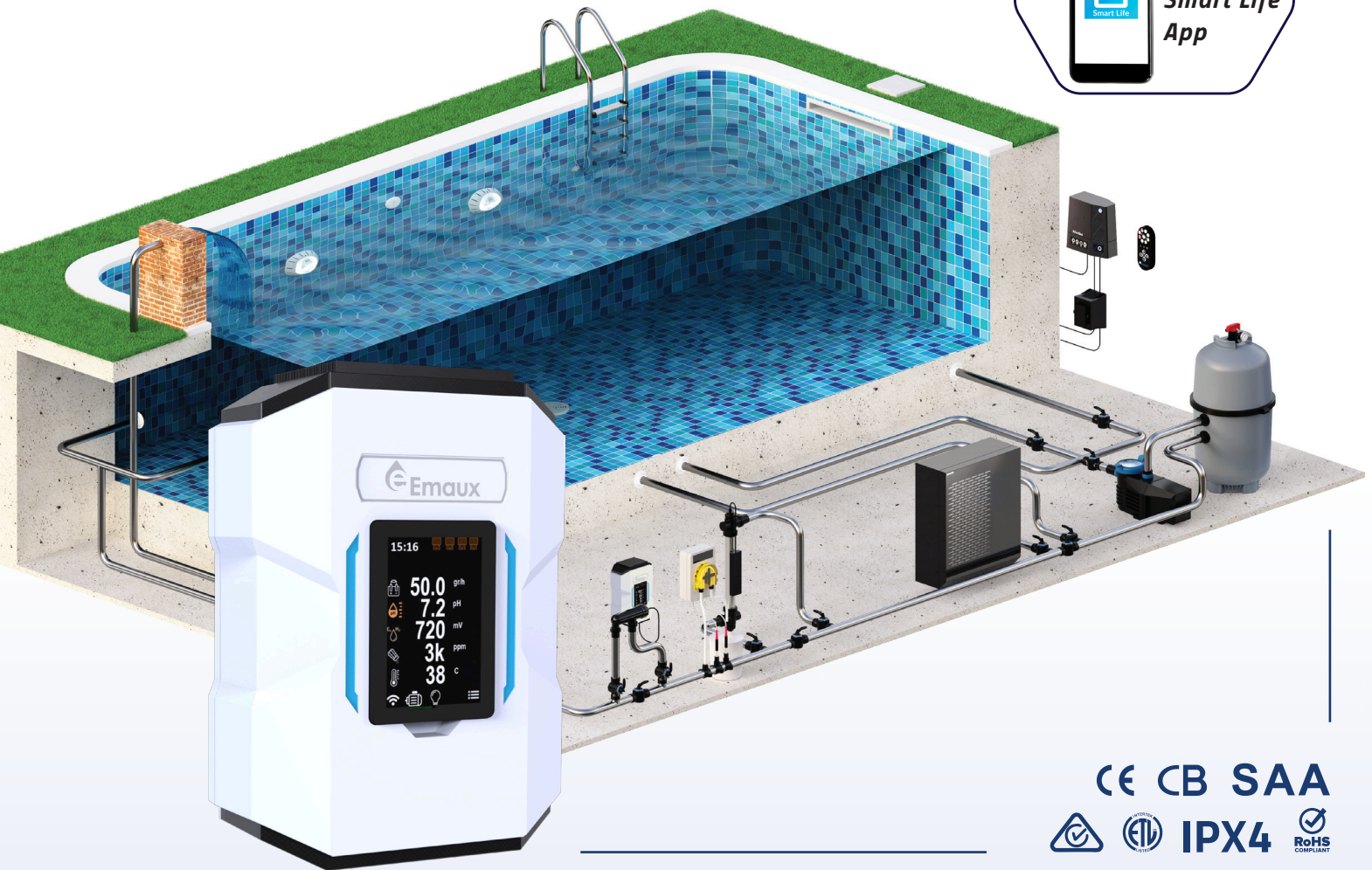


# NEXT-GEN UX DESIGN FOR ADVANCED POOL MANAGEMENT

The CyberSync Pool Station collects real-time swimming pool data, including pH, ORP, salinity, and temperature, while controlling a complete range of pool equipment such as pumps, chlorinators, lighting, heating, and more. It supports scheduling and automation for effortless maintenance.



Monitor and control your pool system remotely via an internet connection



CE CB SAA  
IPX4 RoHS COMPLIANT

The CyberSync automation system can fully control the following products:



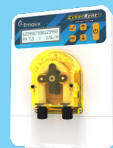
Pump



Chemical Control



UV Light



Dosing



Light



Heater

# SMART SYSTEMS FOR SUPERIOR WATER QUALITY

The advanced IoT-enabled pool monitoring system enhances your pool maintenance experience. Seamlessly connecting to the Smart Life app, it allows real-time monitoring to achieve optimal water conditions and vibrant effects. The system intelligently responds to sensor readings, automatically controlling your pool pump, disinfection system, and other equipment for the best water quality and safety. The Smart Life app also offers robust scheduling and automation, enabling effortless pool management from anywhere. Experience a smarter, more efficient way to maintain your pool with the Smart Life app.



**REAL-TIME  
ALERTS**



**PUMP OPERATION  
STATUS**



**CONNECTION  
STATUS ALERTS**



**REMOTE  
CONTROL**



**AUTOMATED  
SCHEDULING**

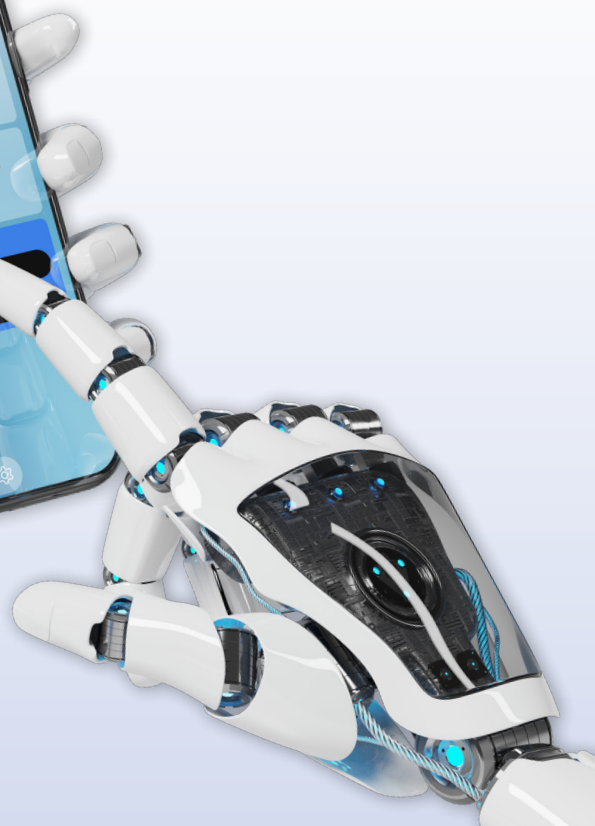


**SEAMLESS  
INTEGRATION**

**DOWNLOAD**

THE APP **SMART LIFE**

**NEW**





# CyberSync

POOL STATION

SMART AI-DRIVEN POOL MANAGEMENT

powered by



## MASTERMIND STATION

### Pure Chlorine Electrolysis

- ORP measure
- Pure chlorine gas
- pH measure & balance

### Large 4.3" LCD Touch Screen

- Modern UX & UI
- Multi-Language
- Detachable

### Multi-Device Control

- Pump
- Lighting
- Heating
- UV system
- Dosing
- Pool Cover

### Real-time control

- Electrolysis
- Measure
- Dosing
- Switch
- Intelligent control
- Setting





## Product features:

- Easy installation and maintenance
- User-friendly interface and operation
- Precise and reliable pool chemical control
- IoT APP control
- Intelligent system

### ROBUST TITANIUM CELL

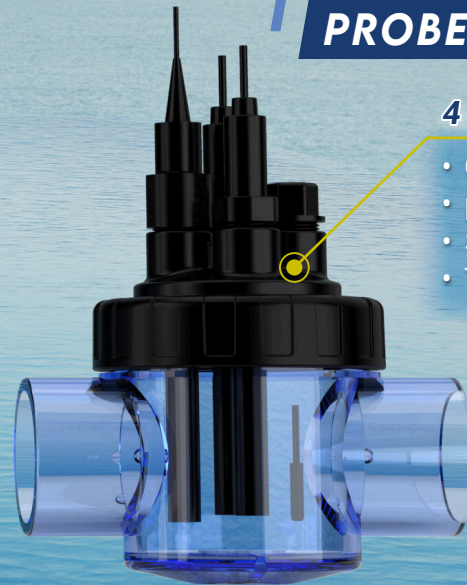
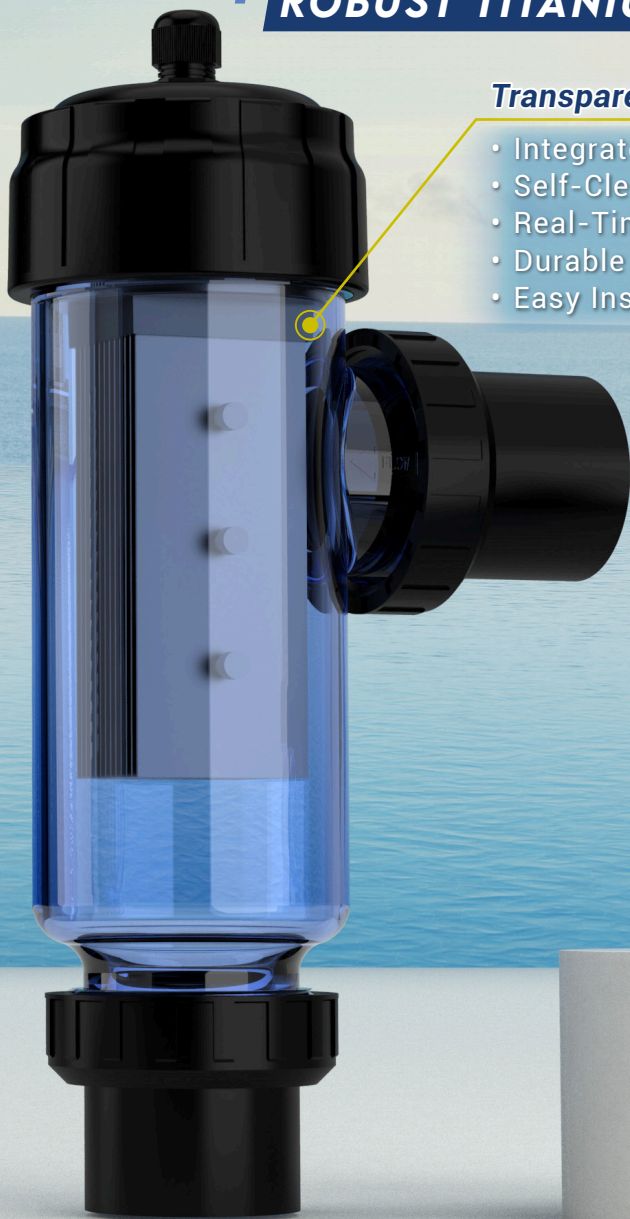
#### Transparent housing

- Integrated Safety Features
- Self-Cleaning Function
- Real-Time Monitoring
- Durable Construction
- Easy Installation

### PROBE HOLDER

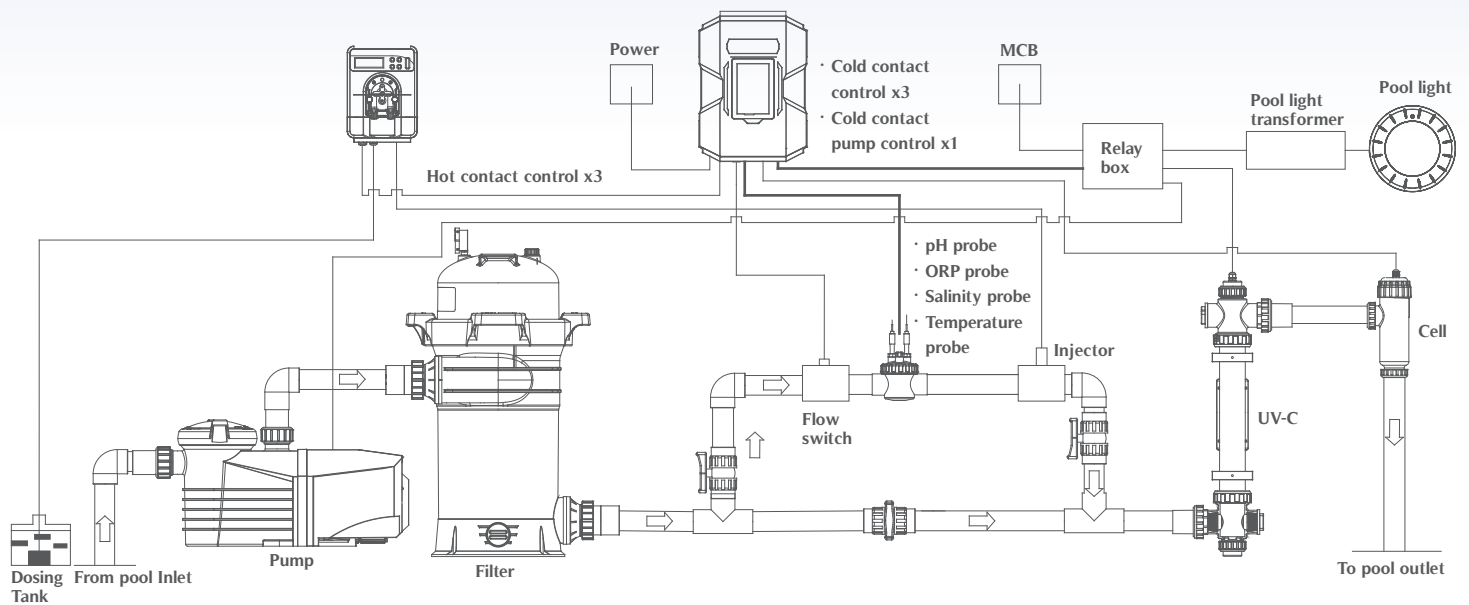
#### 4 probes

- ORP
- pH
- Salinity
- Temperature





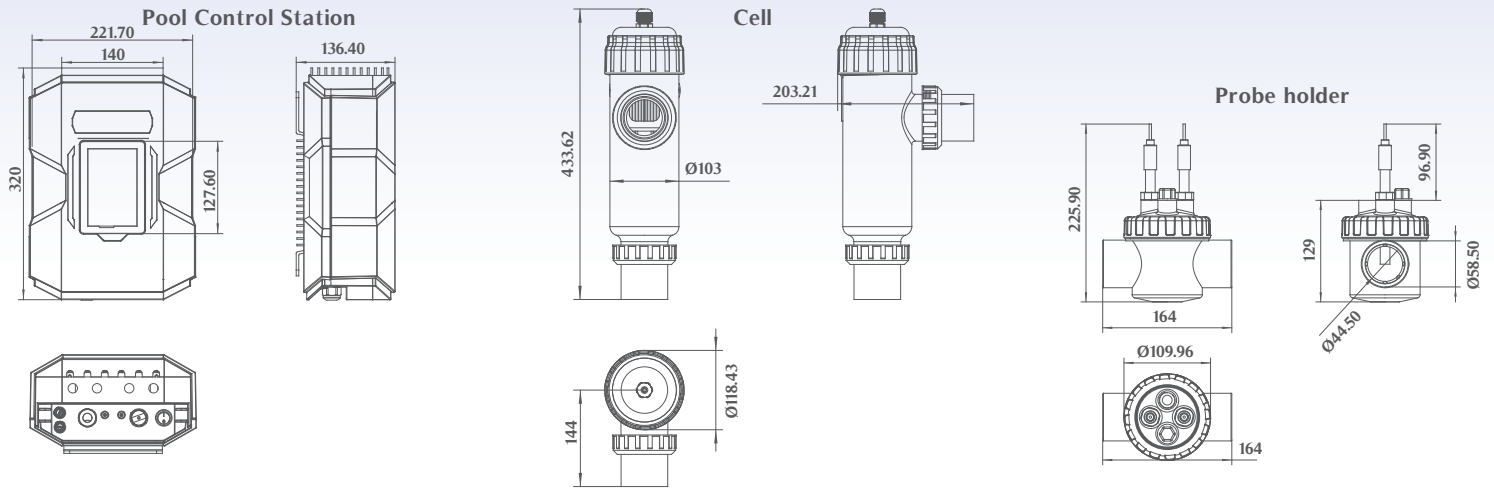
## Installation Diagram



FUNCTION	SPECIFICATION
Display	4.3" LCD with Touch control
Cell type (chlorine production)	20 g/h , 30 g/h or 40 g/h
Measurement	pH, ORP, Salinity and Temperature
Device connection	Dosing pump: x 3 (hot contact) @50W Switch: x 3 (cold contact) Pump control: x 1 (colde contact)
Pool cover detect	Detect connetion x 1
Wi-Fi	- 802.11 b/g/n - 2.4 GHz - STA mode supported
Modbus	RS485
Input	220V to 240V AC, 2A max (EU version) 110V to 120V AC, 4A max (US version)



## Product Information and Dimension:



CyberSync Pool Station		Input Voltage/ Frequency (US Version)	Input Voltage/ Frequency (EU Version)	Salt Level	Cell Output (gram/h)	Concrete Pool (m <sup>3</sup> )	IP Rating	Function
Code	Model							
9130601	CS-A20	110-120V 50 Hz/60 Hz	220-240V 50 Hz/60Hz	3000-5000 ppm	20	60	IPX4	Chlorinator, Measurement, Device connection
9130602	CS-A30	110-120V 50 Hz/60 Hz	220-240V 50 Hz/60 Hz	3000-5000 ppm	30	80	IPX4	
9130603	CS-A40	110-120V 50 Hz/60 Hz	220-240V 50 Hz/60 Hz	3000-5000 ppm	40	100	IPX4	

CyberSync Salt Chlorinator		Input Voltage/ Frequency (US Version)	Input Voltage/ Frequency (EU Version)	Salt Level	Cell Output (gram/h)	Concrete Pool (m <sup>2</sup> )	IP Rating	Function
Code	Model							
9130052	CS-20	110-120V 50 Hz/60 Hz	220-240V 50 Hz/60Hz	3000-5000 ppm	20	60	IPX4	Salt chlorinator
9130053	CS-30	110-120V 50 Hz/60 Hz	220-240V 50 Hz/60 Hz	3000-5000 ppm	30	80	IPX4	
9130054	CS-40	110-120V 50 Hz/60 Hz	220-240V 50 Hz/60 Hz	3000-5000 ppm	40	100	IPX4	

## Probe and Accessories Specifications

Code	Product Name	Parameter	Photo
106090073	ORP probe	Pressure: 7 bar Material: epoxy Measuring range: -300 to 900 mV (with 3 m signal line) Electrode diameter: 12 mm	
106090073	pH probe	Pressure: 7 bar Material: epoxy Measuring range: pH 0-14 (with 3 m signal line) Electrode body diameter: 12 mm	
178818	Salinity probe	Pressure: 7 bar Material: epoxy Measuring range: 1000 to 35000 ppm (with 3 m signal line) Electrode body diameter: 12 mm	
178817	Temperature sensor	stainless steel wit 3 m cable	
1090010392	ORP buffer solution	256 mV, 30 mL	
109007168	pH buffer solution pH 4 and pH 7	pH 4.0 and pH 7.0, 30 mL	
E130078	Probe holder	PVC transparent	
114145332	Flow switch	Normal open	
620065469	Holder	PVC	





**EMAUX WATER TECHNOLOGY CO., LTD**

ADDRESS: 2/F, Lockhart Centre, No. 301-307 Lockhart Road,  
Wanchai, Hong Kong  
PHONE +852 2832 9880  
[www.emauxgroup.com](http://www.emauxgroup.com)

 **YOUR PREMIER SUPPLIER**



ALL SPECIFICATIONS ARE SUBJECT TO CHANGE WITHOUT NOTICE.  
© EMAUX WATER TECHNOLOGY CO., LTD. ALL RIGHTS RESERVED.