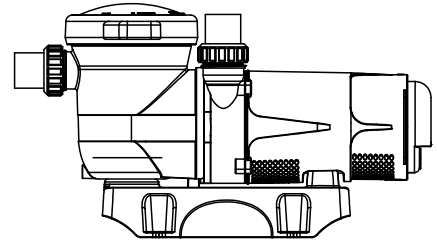


ASC-ODP Series Centrifugal Pump Installation & Operating Instructions



IMPORTANT SAFETY INSTRUCTIONS

When installing and using this electrical equipment, basic safety precautions should always be followed, including the following:

1. READ AND FOLLOW ALL INSTRUCTIONS
2. WARNING -To reduce the risk of injury, do not permit children to use this product unless they are closely supervised at all times.
3. WARNING - Risk of Electric Shock. Connect only to a branch circuit protected by a ground-fault circuit-interrupter (GFCI). Contact a qualified electrician if you cannot verify that the circuit is protected by a GFCI.
4. The unit must be connected only to a supply circuit that is protected by a ground-fault circuit-interrupter (GFCI). Such a GFCI should be provided by the installer and should be tested on a routine basis. To test the GFCI, push the test button. The GFCI should interrupt power. Push the reset button. Power should be restored. If the GFCI fails to operate in this manner, the GFCI is defective. If the GFCI interrupts power to the pump without the test button being pushed, a ground current is flowing, indicating the possibility of an electric shock. Do not use this pump- Disconnect the pump and have the problem corrected by a qualified service representative before using.
5. CAUTION - This pump is for use with permanently installed pools and may also be used with hot tubs and spas if so marked. Do not use with storable pools. A permanently-installed pool is constructed in or on the ground or in a building such that it cannot be readily disassembled for storage- A storable pool is constructed so that it is capable of being readily disassembled for storage and reassembled to its original integrity.
6. (For hot tub and spa pumps) Do not install within an outer enclosure or beneath the skirt of a hot hot tub or spa.
7. It is required that licensed electricians do all electrical wiring. Risk of Electric Shock. Hazardous voltage can shock, burn, cause death or serious property damage. All electrical wiring MUST be in conformance with applicable local and national codes and regulations. Before working on pump or motor, turn off power supply to the pump. Failure to install according to defined instructions will void warranty.
8. SAVE THESE INSTRUCTIONS.

**WARNING – To reduce the risk of electric shock, replace damaged cord immediately.
SAVE THESE INSTRUCTIONS FOR FUTURE REFERENCE**

INSTALLATION

Only qualified, licensed personnel should install pump and wiring.

IMPORTANT ELECTRICAL

EMAUX pumps must be wired to the main power supply through an approved and correctly rated contractor.

Pump Mount Must:

- ❖ Be on solid, level, rigid and vibration free surface.
- ❖ Allow pump suction inlet height to be as close to water level as possible.
- ❖ Allow use of short, direct suction pipe (To reduce friction losses.)
- ❖ Allow for gate valves in suction and discharge piping.
- ❖ Have adequate floor drainage to prevent flooding.
- ❖ Be protected from excess moisture.
- ❖ All adequate access for servicing pump and piping.

NOTICE:

Pump suction and discharge connections have moulded in thread stops, **DO NOT** try to tighten beyond these stops.

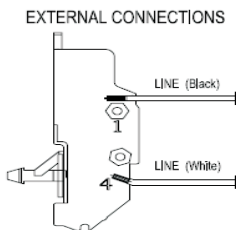
OPERATION



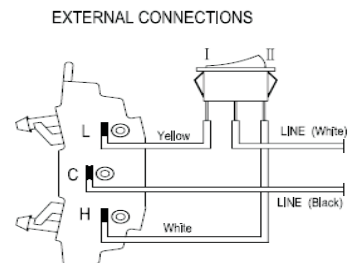
- ▲ **NEVER** dry run the pump! Running pump dry may damage seals, causing leakage and flooding! Fill pump with water before starting motor.
Before removing lid:
- ▲ **STOP THE PUMP .**
 - ❖ **CLOSE THE GATE VALVES** in suction and discharge pipes.
 - ❖ **RELEASE ALL PRESSURE** from pump and piping system.
 - ❖ **NEVER** tighten or loosen screws while pump is operating.
 - ❖ Do not block pump suction! To do so with body may cause severe or fatal injury. Small children using pool must **ALWAYS** have the adult Supervision!
- ▲ **Priming Pump:**
 - ❖ Release all air from filter and piping system: see filter owner manual. In a flooded suction system (water source higher than pump), pump will prime itself when suction and discharge valves are opened.
 - ❖ If pump is not in a flooded suction system, unscrew and remove the cover; fill water into the pump.
 - ❖ Clean and inspect Ring; re-install the cover.
 - ❖ Replace the cover; turn clockwise to tighten cover.
 - ❖ **NOTICE: Tighten the cover by hand only. Turn the pump on a run until prime is established. Priming time will depend on vertical length of suction lift and horizontal length of suction piping.**

Main Power Wiring Instruction

480501JC / 480751JC / 481001JC 115V 60Hz
(1 Speed)



480752JC / 481002JC 115V 60Hz
(2 Speed)



Routine Maintenance

The only routine maintenance needed is inspection/cleaning of trap basket (pre-filter basket). Debris or trash that collects in basket, will choke off water flow through the pump. Follow instructions below to clean trap:

1. Stop pump, close gate valve in suction and discharge, and release all pressure from system before proceeding.
2. Unscrew trap lid (pre-filter lid) by turning counterclockwise.
3. Remove strainer basket and clean. Be sure all holes in basket are clear, flush basket with water and replace in trap (pre-filter) with the large opening at pipe connection port. If basket is replaced backwards cover will not fit on trap body.
4. Clean and inspect lid.
5. Clean the O-ring and its groove on trap body (pre-filter) and replace lid. To help keep lid from sticking, tighten by hand only.
6. Prime pump (see priming instructions above)

SERVICE & REPAIR PARTS

Refer all service to your local agent or dealer as his knowledge of your equipment makes him the vest qualified source of information. Order all repair parts through your dealer. Give the following information when ordering repair parts:

1. Unit name, model number and part number.
2. Description of part.

INSTALLATION

CAUTION: THE PUMP SHOULD BE INSTALLED ACCORDING TO YOUR LOCAL ELECTRICAL INSTALLATION RULES.

ONLY QUALIFIED, LICENSED PERSONNEL SHOULD INSTALL PUMP.

1. Locate pump as close to pool as possible, preferably in a dry, well ventilated area away from direct sunlight. It should be on a hard, level surface. Give consideration to:

- a: Drainage far away from pump
- b: Ventilation of pump motor
- c: Access for future servicing and winterizing

2. Fixed the pump by screws onto the platform.

3. Connect the suction and discharge pipe to the outlet and inlet of the swimming pool.

TROUBLE SHOOTING

MOTOR DOES NOT START

1. Disconnect switch or circuit breaker in off position
2. Fuses blown or thermal overload open
3. Locked motor shaft
4. Motor windings burned out
5. Defective starting switch inside single phase motor
6. Disconnected or defective wiring
7. Low voltage

PUMP DOES NOT REACH FULL SPEED

1. Low voltage
2. Pump connected for wrong voltage

MOTOR OVERHEATS (protector trips)

1. Low voltage
2. Motor windings connected for wrong voltage on dual voltage model
3. Inadequate ventilation

PUMP DELIVERS NO WATER

1. Pump is not primed
2. Closed valve in suction or discharge line
3. Leakage or air into suction system
4. Impeller clogged

LEAKAGE OF WATER AT SHAFT

1. Shaft seal requires replacement

LOW PUMP CAPACITY

1. Valve in suction or discharge line partly closed
2. Suction or discharge line partly plugged
3. Suction or discharge line too small
4. Plugged basket in skimmer or hair and lint strainer
5. Dirty filter
6. Impeller clogged

HIGH PUMP PRESSURE

1. Discharge valve or inlet fittings closed too much
2. Return lines too small
3. Dirty filters

NOISY PUMP AND MOTOR

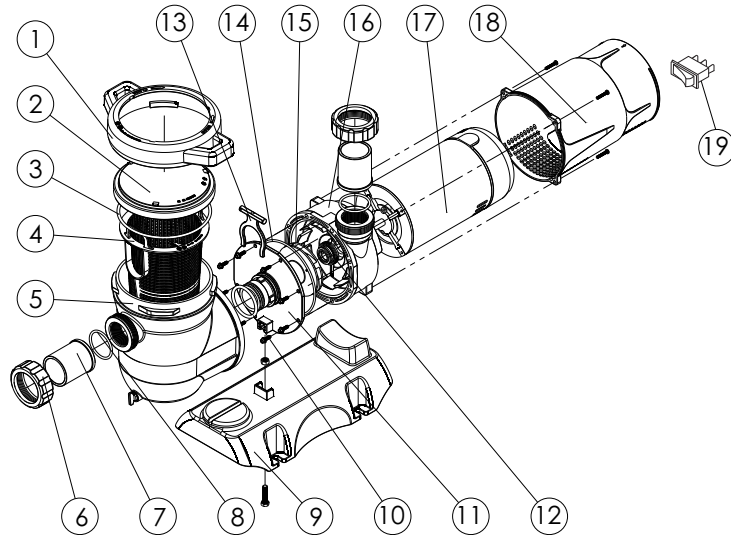
1. Plugged basket in skimmer or hair in lint strainer
2. Worn motor bearings
3. Valve in suction line partly closed
4. Suction line partly plugged
5. Vacuum hose plugged or too small
6. Pump not supported properly

AIR BUBBLES AT INLET FITTINGS

1. Leakage of air into suction line at connections or valve stem
2. Cover gasket of hair and lint strainer needs cleaning
3. Low water level in pool

NOTE: If the recommendations in the trouble shooting portion of this manual do not solve your particular problem(s), please contact your local dealer for service.

PUMP PARTS FOR ASC-ODP



Item	Part No.	Description	Qty
1	420407395	Nut For Lid	1
2	420387395	Transparent Lid	1
3	111010048	O-Ring for Lid	1
4	420237395	Basket with Handle	1
5	420247395	Pump Pre-Filter	1
6	420307395	1.5" Union nut	2
7	420220904	1.5"Union	2
8	111002362	O-Ring for 1.5" Union	2
9	420127395	Base	1
10	111010049	O-Ring	1
11	420037395	Pump Body Cover	1
12	113006600	Mechanical Seal	1
13	420327395	Arm in arm	1
14	111010050	Waterproof washer	1
15	420366597	Impeller ASC075-ODP	1
15	420366598	Impeller ASC100-ODP	1
15	420366599	Impelle ASC150-ODP	1
16	420047395	Lower part of Pump Body	1
17	104077655	Motor 480501JC(0.75HP)	1
17	104077656	Motor 480751JC(1.0HP)	1
17	104077657	Motor 481001JC(1.5HP)	1
17	104077658	Motor 480752JC(1.0HP)	1
17	104077659	Motor 481002JC(1.5HP)	1
18	420157395	Motor shield	1
19	106178459	Switch button(single speed)	1
19	106178460	Switch button(two speed)	1