



THE SMARTER SALT SYSTEM FOR A SOFTER SWIM

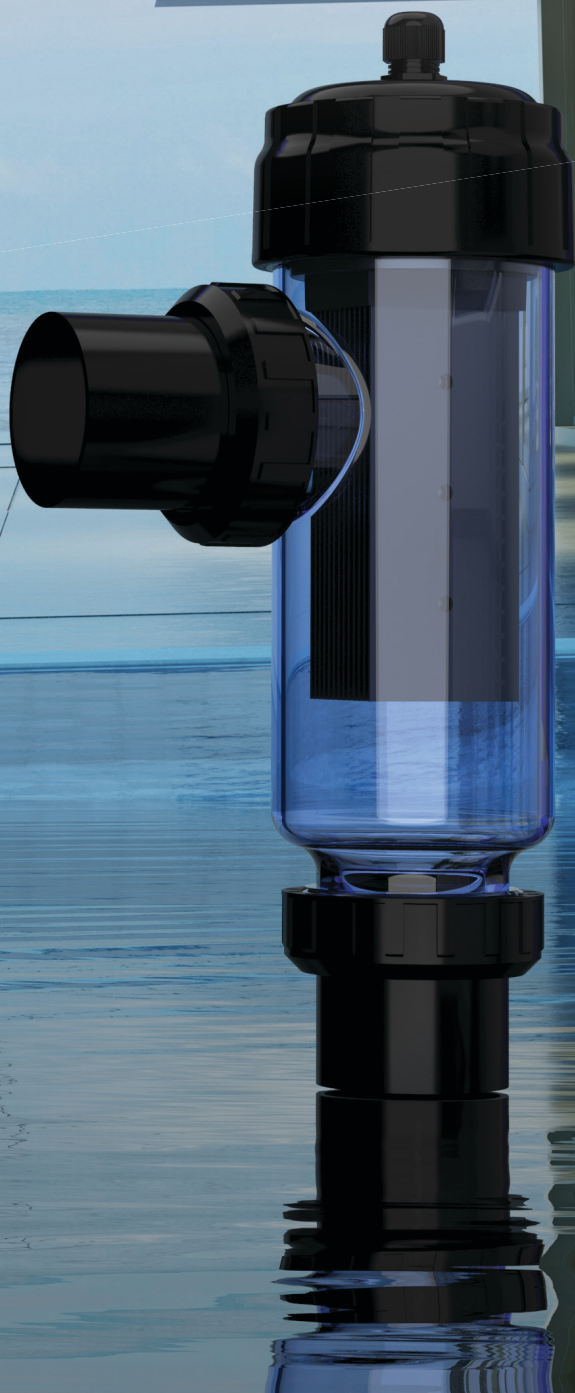
For residential and semi-commercial pools

powered by



CyberSync

Salt Chlorinator



INTELLIGENT WATER DISINFECTION SYSTEM

The CyberSync Salt Chlorinator marks a major upgrade. Its low-salt operation (1000 ppm) leverages advanced electrolyzer technology to deliver extremely soft water. Salt levels are so low they're almost imperceptible, significantly reducing skin, eye (especially for sensitive individuals), and hair irritation. Skin won't feel tight or sticky after swimming. It integrates seamlessly with the Smart Life app for real-time monitoring to ensure optimal water quality. This advanced IoT pool system improves maintenance efficiency with its modern, user-friendly interface and powerful protection programs designed for various operating environments.

MAIN CONTROLLER

Large 4.3" LCD Touch Screen

- APP Control
- Winter mode
- Modern UX & UI
- Multi-Language
- Adjustable output

Multi-Device Control

- Pump
- Dosing
- Heating
- Lighting
- UV system
- Pool Cover



DOWNLOAD
THE APP **SMART LIFE**

NEW



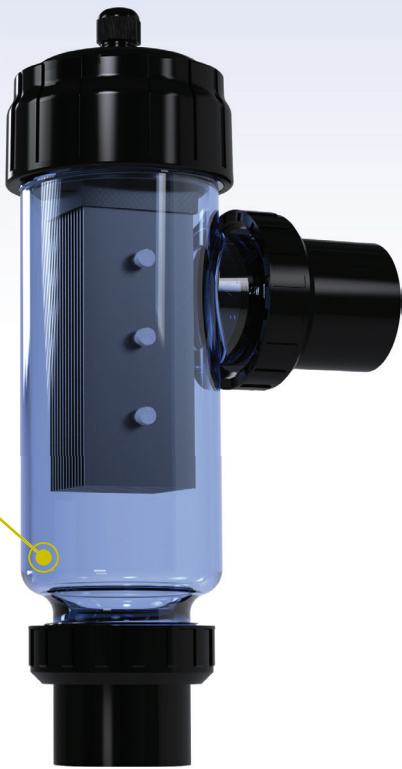
GET IT ON
Google Play

Download on the
App Store

ROBUST TITANIUM CELL

Transparent housing

- Gas Detector
- Easy Installation
- Durable Construction
- Self-Cleaning Function
- Integrated Safety Features



LOW-SALT
OPERATION



REAL-TIME
ALERTS



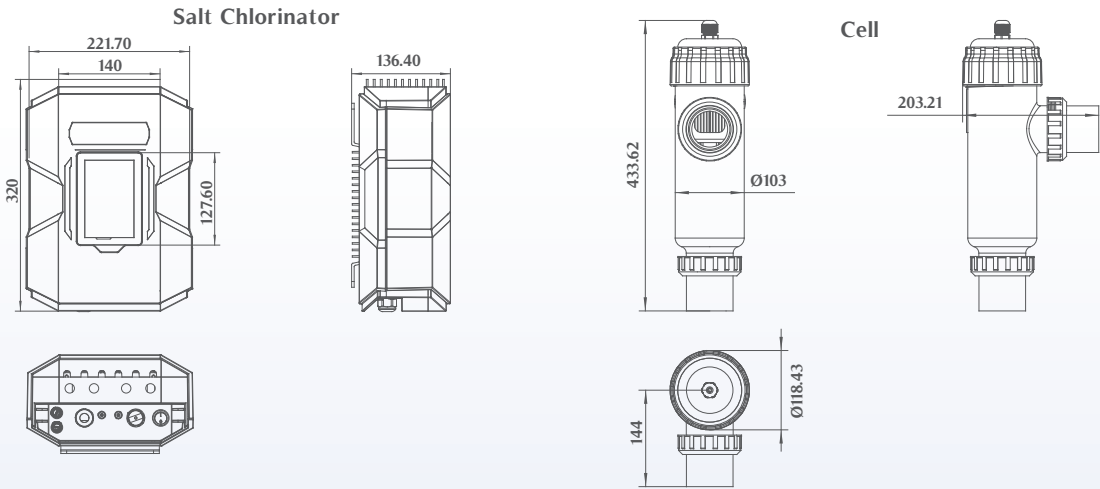
APP REMOTE
CONTROL



SEAMLESS
INTEGRATION

CE CB SAA
IPX4 RoHS COMPLIANT

Product Information and Dimension:



CyberSync Salt Chlorinator		Input Voltage/ Frequency	Salt Level (ppm)	Cell Output (gram/h)	Concrete Pool (m³)	Max Consumption	Rating	Function
Code	Model							
9130052	CS-20	110-240V 50/60 Hz	3000/1000	20/10	100/60	210W	IPX4	Salt Chlorinator
9130053	CS-30	110-240V 50/60 Hz	3000/1000	30/15	140/80	280W		
9130054	CS-40	110-240V 50/60 Hz	3000/1000	40/20	180/100	370W		

Optional Accessories Specifications

Code	Product Name	Parameter	Photo
50903030	Flow switch	Normal open	
12001001	Holder	PVC	



EMAUX WATER TECHNOLOGY CO., LTD

ADDRESS: 2/F, Lockhart Centre, No. 301-307 Lockhart Road,
Wanchai, Hong Kong

PHONE +852 2832 9880

www.emauxgroup.com

 **YOUR PREMIER SUPPLIER**