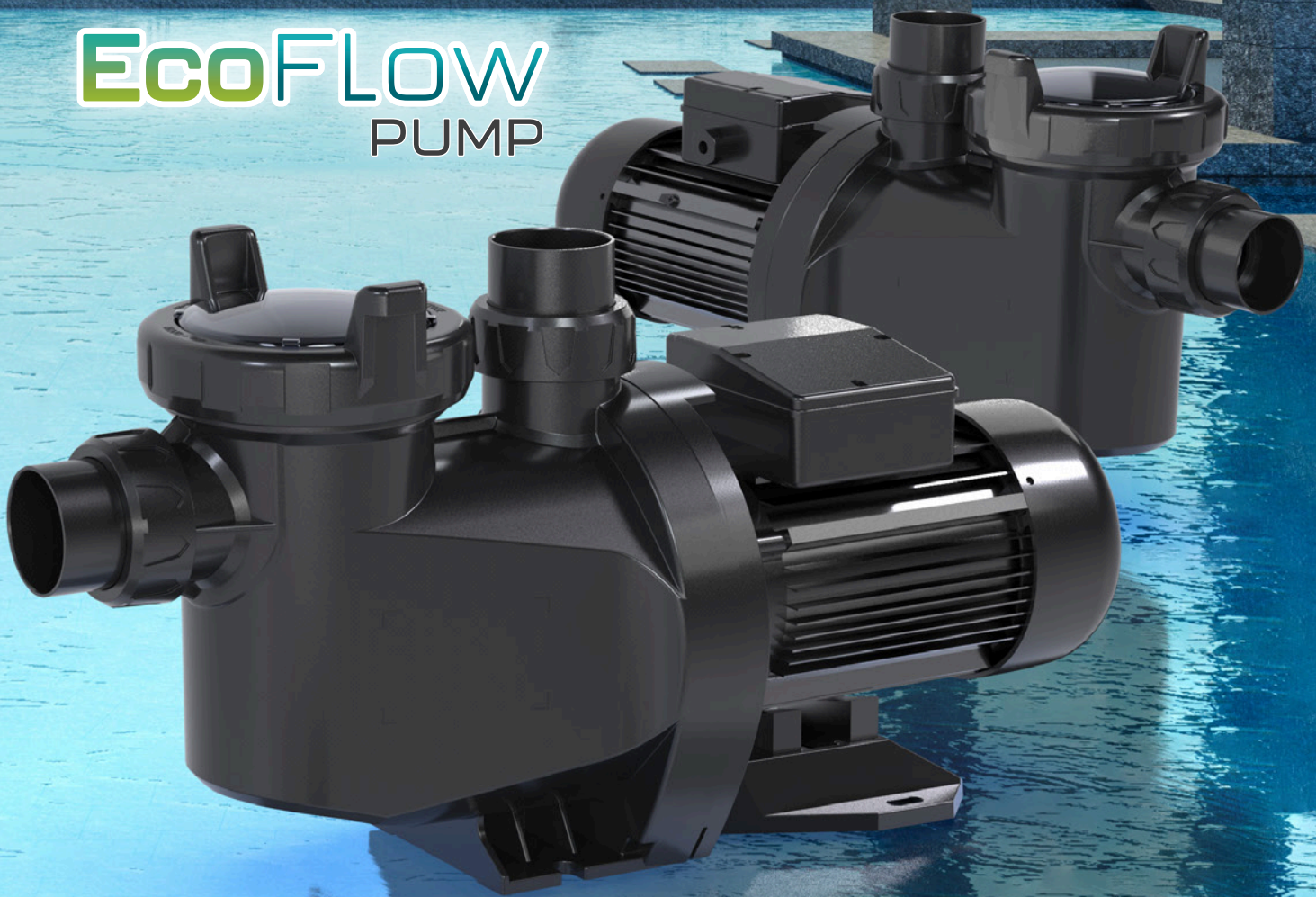




DURABLE DESIGN SEAMLESS INTEGRATION

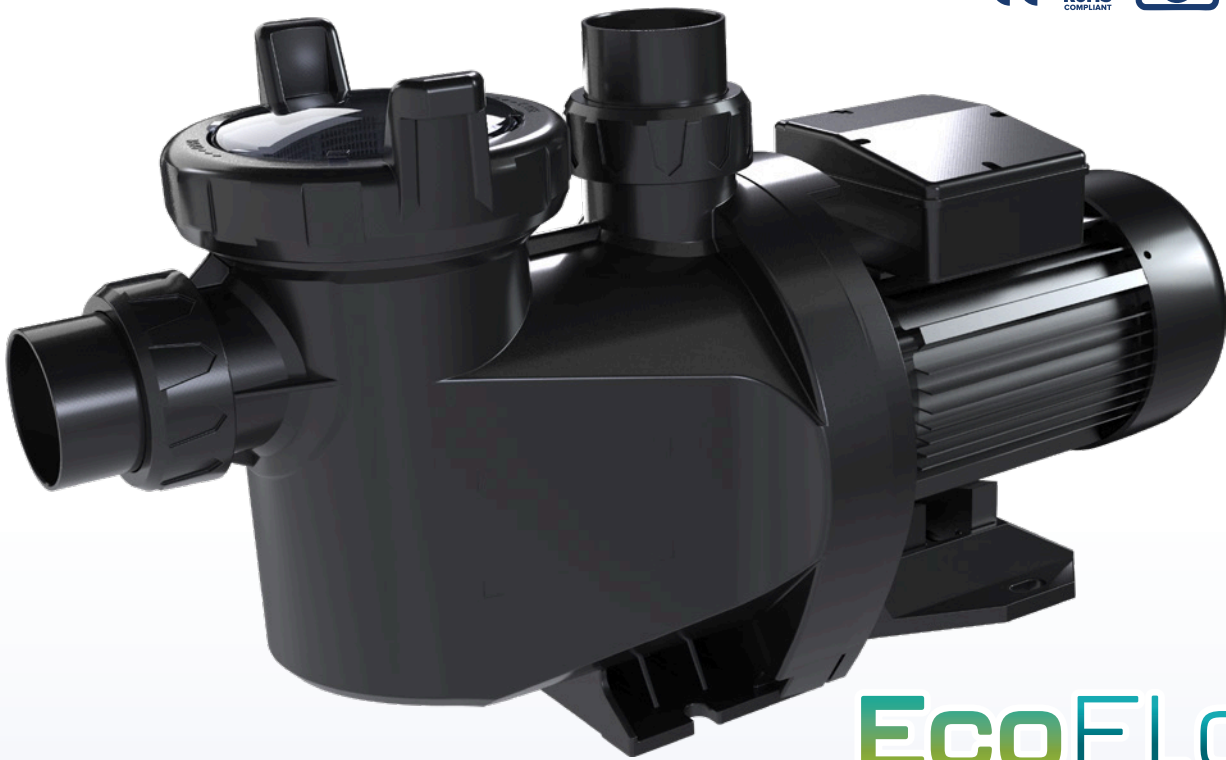
FOR RESIDENTIAL POOLS AND SPAS

EcoFLOW
PUMP



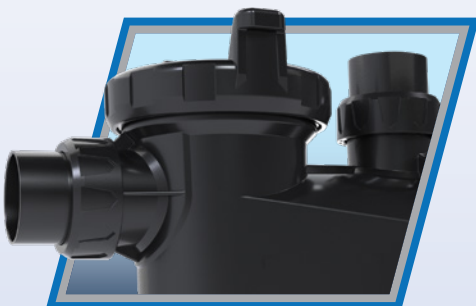
HIGH PERFORMANCE & SAVE ENERGY

The Emaux EcoFlow Single-Speed Pump merges enhanced self-priming, a durable high-strength polymer housing, and noise reduction for quiet, efficient pool/spa operation. Optimized fluid dynamics maximize water flow with minimal energy, cutting runtime and electricity costs. It integrates seamlessly into existing systems, eliminating costly upgrades. Energy-efficient performance reduces power use and maintenance, saving time and money. Combining durability, adaptability, and quiet operation, the EcoFlow offers a cost-effective upgrade for modernizing pools effortlessly.

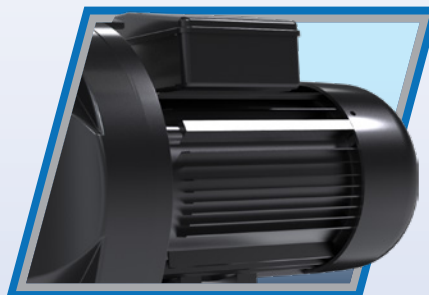


EcoFLOW
PUMP

Special Design for EcoFlow pump



Precise alignment with plumbing position, making it easy to replace the Astralpool CTX



High-performance two-pole asynchronous motor

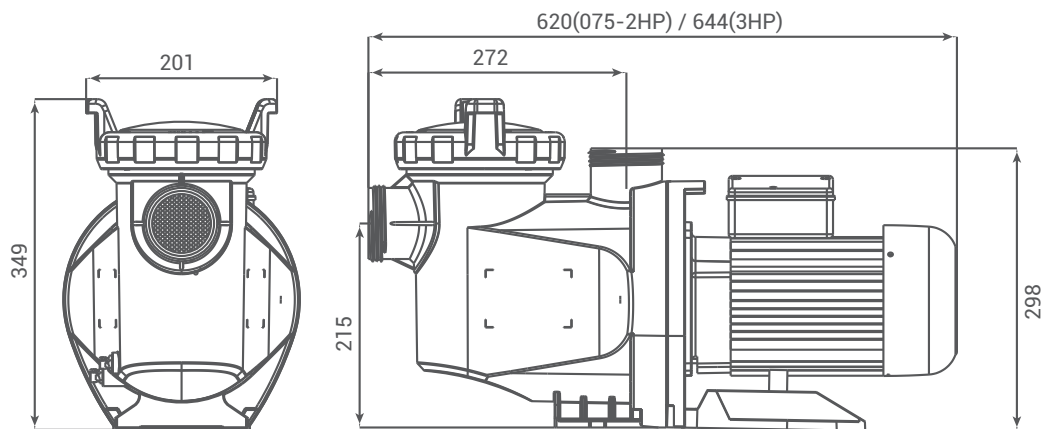


Enhanced self-priming through an innovative pump body design

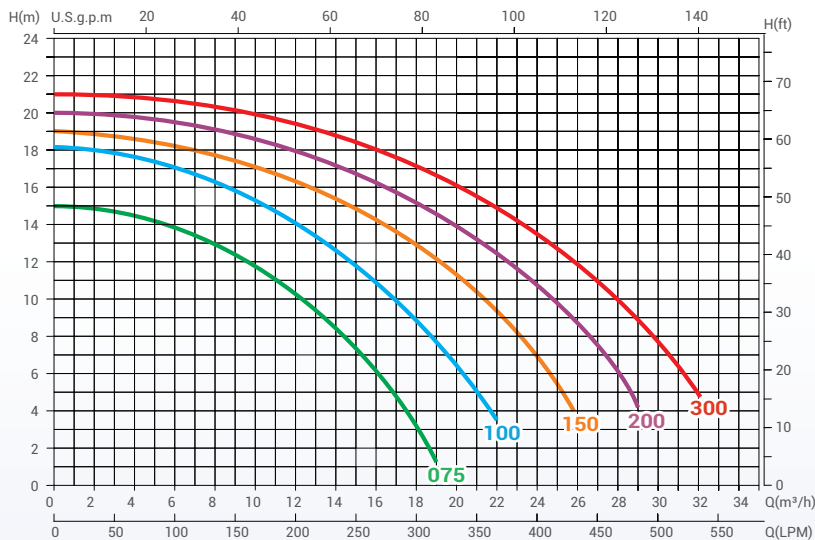
Product feature:

- Self-priming up to 3.5m above water level
- Feasible union design for both imperial and metric standard
- Basket volume 2L
- Robust suction-resistant filter basket with specially designed filter holes
- Direct replacement for other model pumps
- Class insulation Class F
- Thermal or over current protection
- IPX5 Waterproof Standard
- Asynchronous, two-pole motor
- Precise alignment with plumbing position, making it easy to replace the Astralpool CTX

Product Dimensions



Technical Information



Model	Input (kW)	Current (AMP)	Noise (dB)	Head (m)					
				6	8	10	12	14	16
				Flow Rate (m³/h)					
ECF075	0.75kW	3.5	63	16	14.4	12.4	9.5	5.5	--
ECF100	1.1kW	5	64	20	19.8	16.8	14.8	12	8.5
ECF150	1.5kW	6.8	65	24.5	23.2	21.5	19.2	16.5	12.5
ECF200	1.8kW	8.2	65	28	26.6	25	22.5	20	16.5
ECF300	2.2kW	10	67	31.2	29.8	28	25.8	23.2	20



Code	Model	Power	Connection size	Housepower	Weight	Input Power	Capacitance
9024601	ECF075	230V/50Hz	1½"/50 mm 2"/63mm	0.75HP	14.5Kg	0.75kW	20uF
9024602	ECF100	230V/50Hz	1½"/50 mm 2"/63mm	1.0HP	14.5Kg	1.1kW	25uF
9024603	ECF150	230V/50Hz	1½"/50 mm 2"/63mm	1.5HP	15.0Kg	1.5kW	25uF
9024604	ECF200	230V/50Hz	1½"/50 mm 2"/63mm	2.0HP	15.2Kg	1.8kW	30uF
9024605	ECF300	230V/50Hz	1½"/50 mm 2"/63mm	3.0HP	15.7Kg	2.2kW	35uF



EMAUX WATER TECHNOLOGY CO., LTD

ADDRESS: 2/F, Lockhart Centre, No. 301-307 Lockhart Road,

Wanchai, Hong Kong

PHONE +852 2832 9880

www.emauxgroup.com

 **YOUR PREMIER SUPPLIER**



ALL SPECIFICATIONS ARE SUBJECT TO CHANGE WITHOUT NOTICE.

© EMAUX WATER TECHNOLOGY CO., LTD. ALL RIGHTS RESERVED.