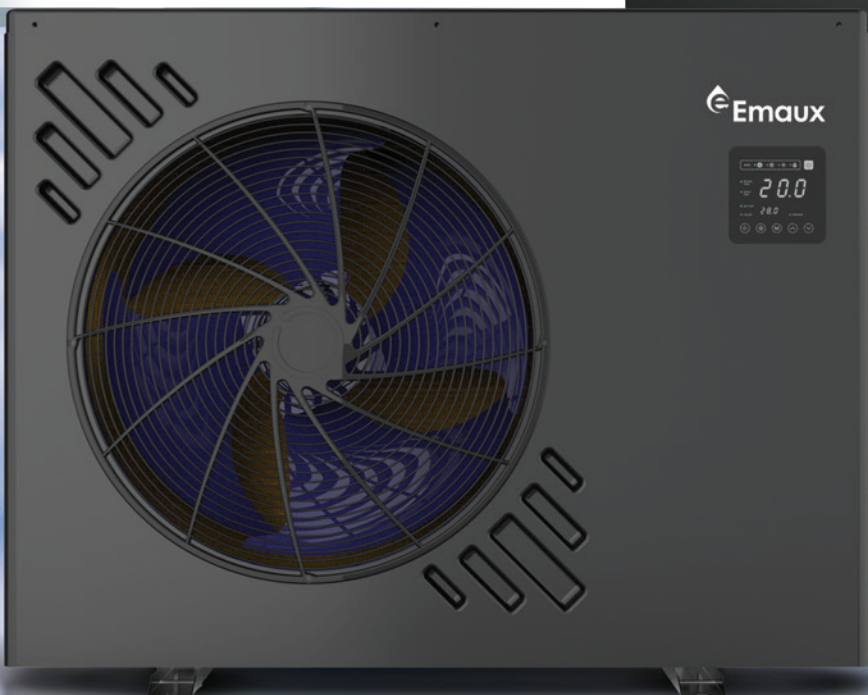




ADVANCED INVERTER POWER SUPERIOR PERFORMANCE

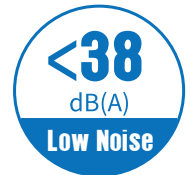
FULL DC INVERTER POOL HEAT PUMP

EcoHeat
INVERTER **GOLD** HEAT PUMP



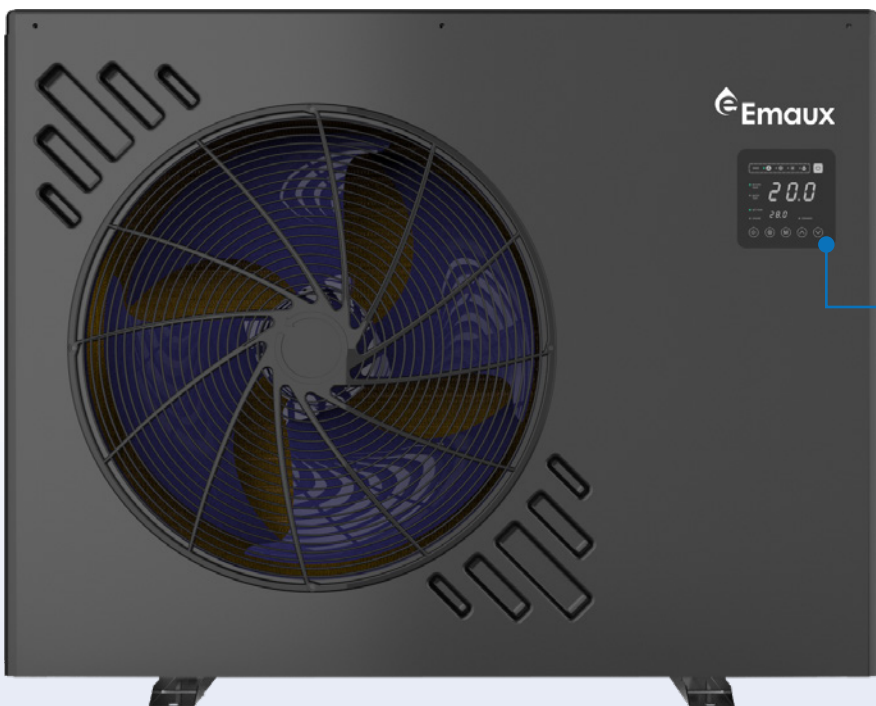
HIGH PERFORMANCE & SAVE COST

The EcoHeat Inverter Gold Heat Pump features a durable ABS body designed to withstand year-round weather conditions. It utilizes advanced inverter technology, distinguished from traditional heat pumps, to save more energy and reduce carbon dioxide emissions. The unit comes with R32 refrigerant and achieves a high Coefficient of Performance (COP) of up to 17, ensuring exceptional energy efficiency. Equipped with an intelligent LED touch display and a smart app for seamless control, it operates effectively in temperatures ranging from -7°C to 43°C. A key feature is the smart defrosting system, which activates automatically to optimize performance and reliability.



EcoHeat
INVERTER **GOLD** HEAT PUMP

CE CB IPX4



INTELLIGENTLY SMART FUNCTION

The smart AUTO modes dynamically adjust to temperature changes, saving energy and maintaining pool heat.

Product feature:

- Operation air temperature (-7~43°C)
- Heating up to 40°C; Cooling up to 8°C
- ABS Front panel, Metal back panel
- Connection: 1.5"/ 50mm
- IPX4 Waterproof Standard
- Intelligent LED Touch Display
- Automatic defrosting with smart control

New Connectivity and External Smart Control

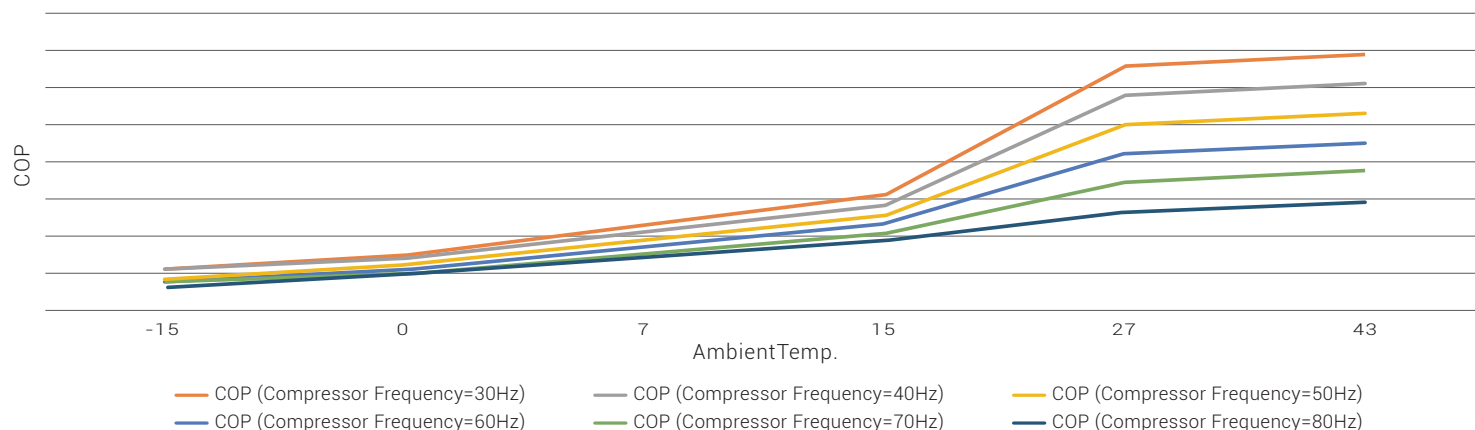
DOWNLOAD THE APP SMART LIFE



IoT Connection:

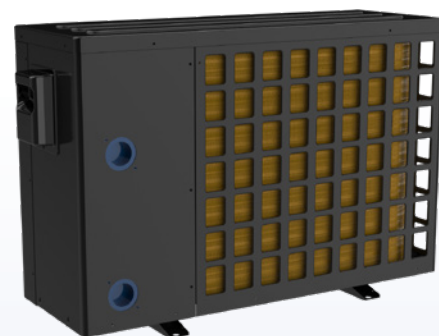
An IoT version can be controlled and monitored over an internet connection, enabling users to manage pool functions remotely. This connectivity allows for real-time adjustments, automated scheduling, and enhanced efficiency in maintaining optimal water temperature.

Graph of variable working condition for COP
The maximum COP can reach 17



Product Dimensions

Code	Model	Net weight (KG)	Gross weight (KG)	Net dimensions (mm)	Packing dimensions (mm)
931866226	EcoHeat 20	42	52	929.5×360×609.8	980×420×760
931866228	EcoHeat 35	44	54	929.5×360×609.8	980×420×760
931866230	EcoHeat 50	68.5	73	1045×454.6×771.3	1140×490×910
931866231	EcoHeat 60	89	106	1159×490×858	1210×555×1010
931866233	EcoHeat 80	99	118	1159×490×858	1210×555×1010



Product Information

Code	Model	Advised Pool Volume (m ³)	Air 27°C / Water 26°C (Humid. 80%)			Air 15°C / Water 26°C (Humid. 70%)			Heating Running Current (A)	Air 35°C / Water 30°C (Humid. 41%)			Cooling Running Current (A)	Power Supply (V/Ph/N/Hz)	Water Flow Volume (m ³ /h)	Noise (Min-Max) dB(A)
			Heating Capacity (kW)	Consumed Power (kW)	COP Range	Heating Capacity (kW)	Consumed Power (kW)	COP Range		Cooling Capacity (kW)	Consumed Power (kW)	EER Range				
931866226	EcoHeat 20	25-45	3.2-8.8	0.2-1.52	16.0-5.8	1.33-6.3	0.19-1.54	7.0-4.1	9.90	1.05-2.77	0.31-1.41	3.35-1.96	2.22-6.02	230V 1Ph 50Hz, 60Hz	4.0	38-48
931866228	EcoHeat 35	35-70	3.42-13.1	0.2-2.27	16.3-5.8	1.8-9.8	0.25-2.23	7.2-4.4	12.51	1.47-3.76	0.37-1.75	4.03-2.15	2.85-7.43		5.2	39-51
931866230	EcoHeat 50	55-85	3.9-18.0	0.23-3.15	16.8-5.7	2.3-13.6	0.32-3.02	7.1-4.5	15.72	2.74-7.54	0.65-3.15	4.19-2.4	5.02-13.96	7.5	42-53	
931866231	EcoHeat 60	60-95	6.0-24.0	0.35-3.82	17.0-6.3	4.2-18.0	0.55-3.92	7.6-4.6	22.7	4.87-12.5	1.17-4.34	4.16-2.88	5.19-19.26	8.5	44-55	
931866233	EcoHeat 80	95-150	8.0-35.0	0.48-5.07	16.6-6.9	7.5-24.0	1.02-5.4	7.3-4.4	11.70	7.69-16.0	1.87-5.71	4.11-2.8	8.30-25.33	380-415V 3N 50Hz, 60Hz	13.8	47-57



EMAUX WATER TECHNOLOGY CO., LTD

**ADDRESS: 2/F, Lockhart Centre, No. 301-307 Lockhart Road,
Wanchai, Hong Kong**

PHONE +852 2832 9880

www.emauxgroup.com

💧 YOUR PREMIER SUPPLIER

ALL SPECIFICATIONS ARE SUBJECT TO CHANGE WITHOUT NOTICE.

© EMAUX WATER TECHNOLOGY CO., LTD. ALL RIGHTS RESERVED.